




Dell EVO:RAIL Horizon Deployment Guide

Version 1.0



Notes, cautions, and warnings

-  **NOTE:** A NOTE indicates important information that helps you make better use of your computer.
-  **CAUTION:** A CAUTION indicates either potential damage to hardware or loss of data and tells you how to avoid the problem.
-  **WARNING:** A WARNING indicates a potential for property damage, personal injury, or death.

Copyright © 2015 Dell Inc. All rights reserved. This product is protected by U.S. and international copyright and intellectual property laws. Dell™ and the Dell logo are trademarks of Dell Inc. in the United States and/or other jurisdictions. All other marks and names mentioned herein may be trademarks of their respective companies.

2015 - 05

Rev. A00

Contents

1 VMware Horizon Installation	4
View Connection Server.....	4
Pre-requisites.....	4
Installation steps.....	4
View Composer.....	14
Installing VMware View Composer.....	24
Configuring View Composer.....	31
2 Gold Image Preparation.....	41
Installing VMware View Agent.....	41
3 Pool Deployment.....	47
4 VMware View Client.....	64
5 Upgrading Existing Evo:Rail Appliance.....	71
Update.....	71
Update EVO:RAIL RPM.....	71
Update vCenter Server.....	73
Update EVO:RAIL VIB.....	74
Update ESXi.....	74

VMware Horizon Installation

This section lists the tasks required to install VMware Horizon on top of EVO:RAIL. The tasks listed above must be completed first so that a vCenter cluster is created successfully. The following tasks are based on the assumptions that all the required VMs such as View Connection Server, View Composer and others are created and running on the vCenter cluster created earlier.

View Connection Server

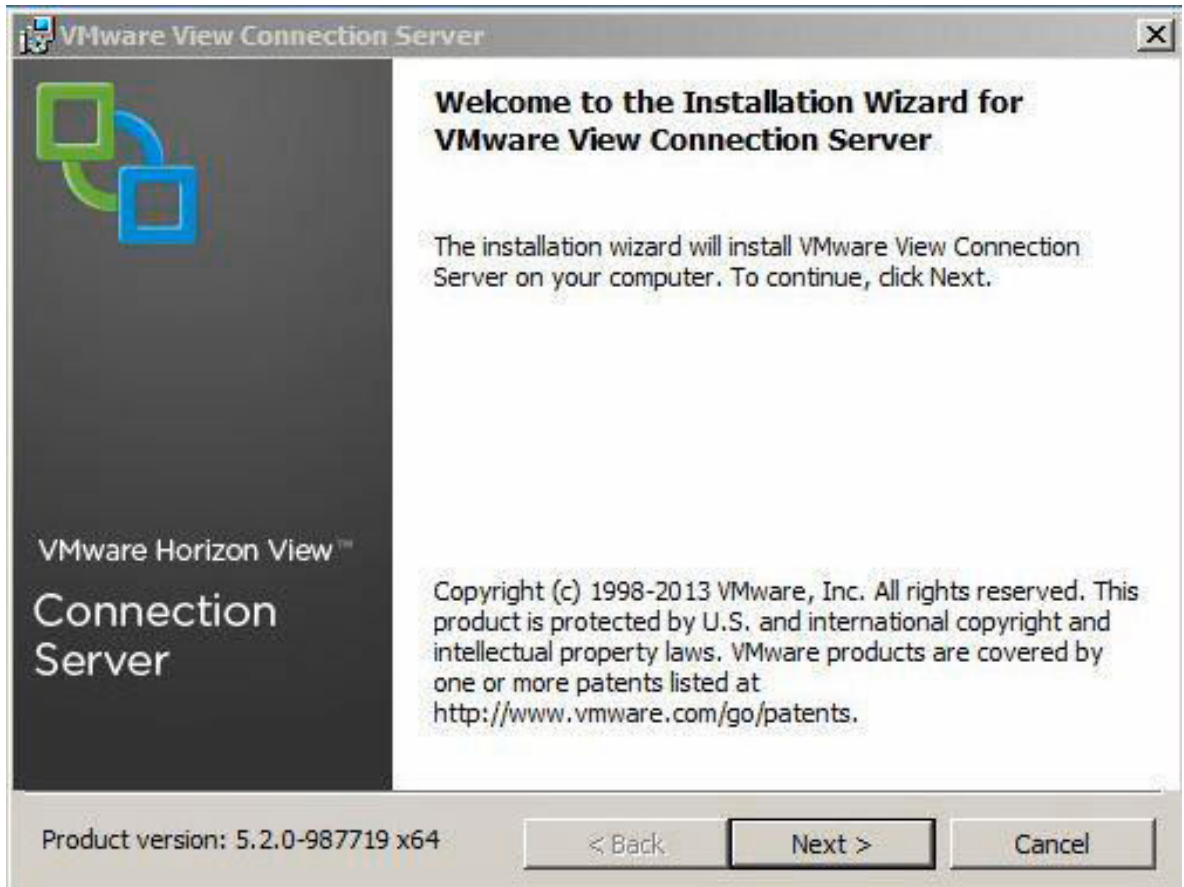
Pre-requisites

The following activities must be performed prior to completing the View Connection Manager Installation and Setup:

- Configure a static IP Address for the View Connection Server.
- Obtain a valid license key for View Connection Server.
- Join the View Connection Server host to an Active Directory domain. The View Connection Server supports Active Directory on Windows 2003 and 2008.
- Authorization of a View Administrators account will be required during the installation, pre-create, and prepare to specify either a local administrators group or a domain user or group account.
- Authorize a user in the vCenter Server in order to add vCenter Server to View Manager.
- In vSphere Client, click **Home** → **Roles** → **Add Role**, type a role name such as View Manager Administrator, and select appropriate privileges for the role.
- Log in by using a domain user account with Administrator privileges on the system, start the View Connection Server installation program, double-click the installer file, and then proceed with the steps here for installation.

Installation steps

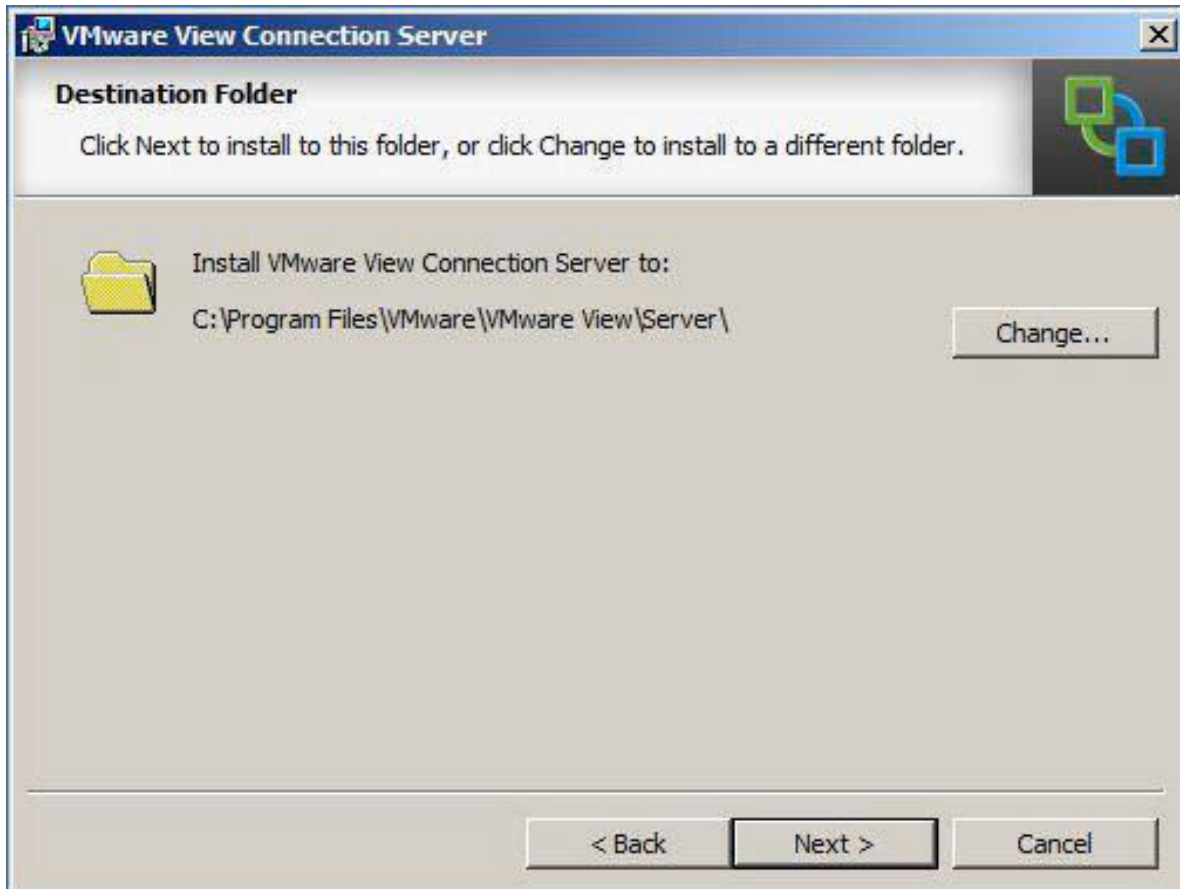
1. Start View Connection Server installation media and click **Next**.



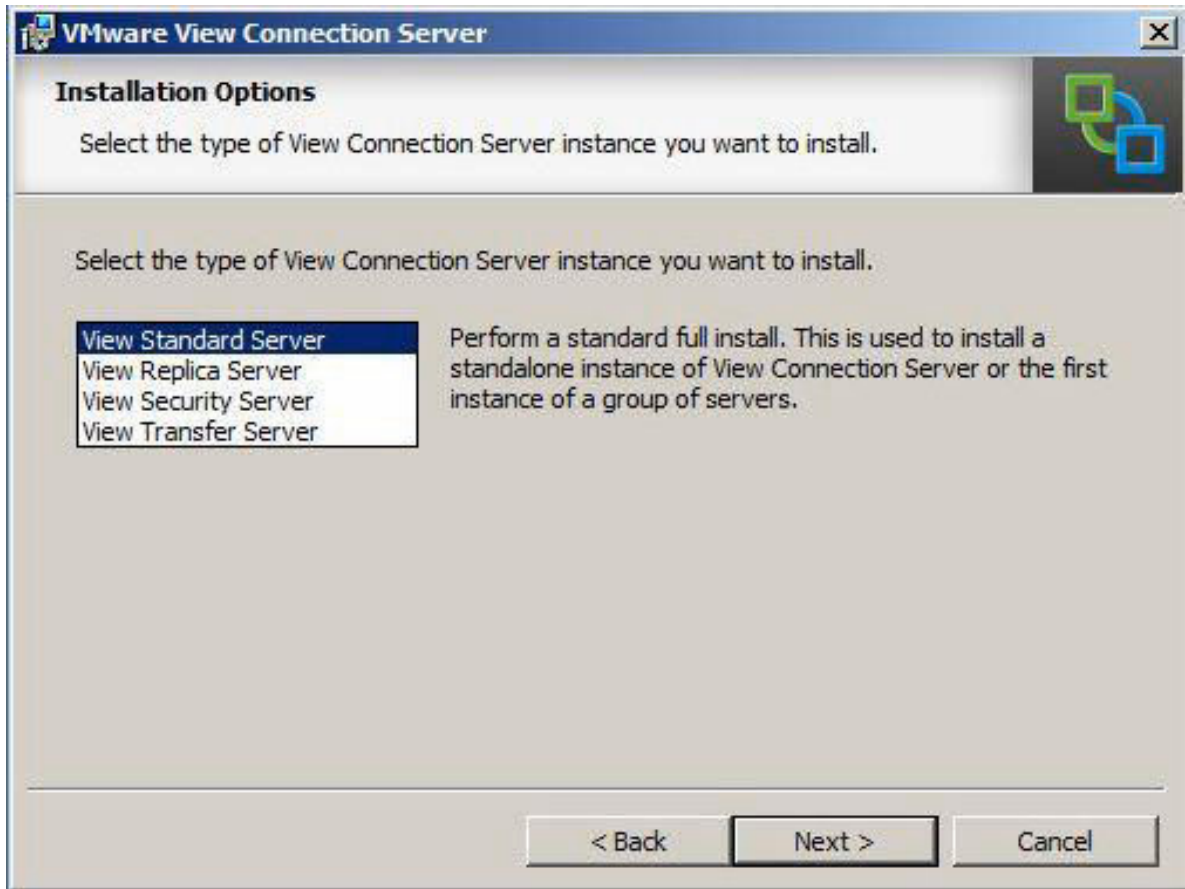
2. Accept the VMware EULA and click **Next**.



3. Accept the default installation folder or select a custom folder for installation and click **Next**.



4. Select **View Standard Server** for the installation type and click **Next**.



5. Type a data recovery password and, optionally, a password reminder, and then click **Next**.

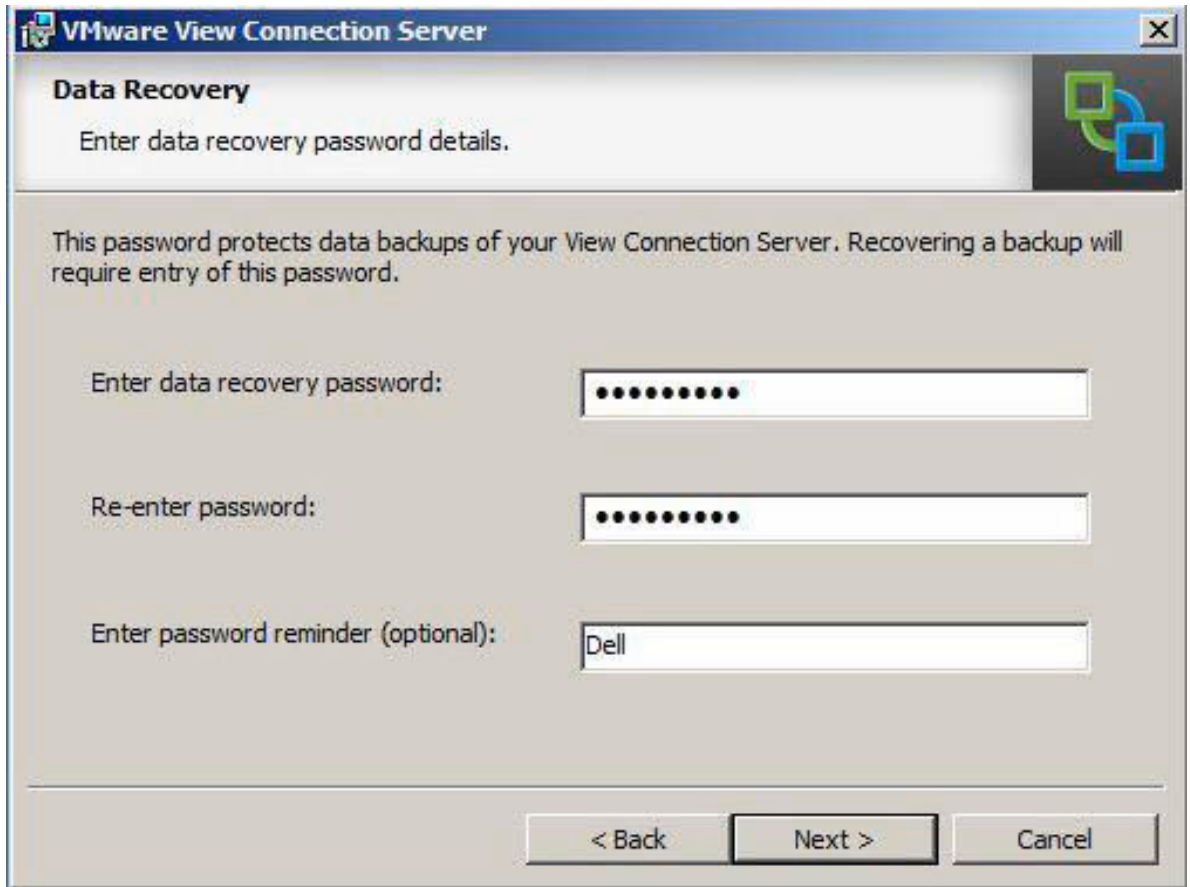
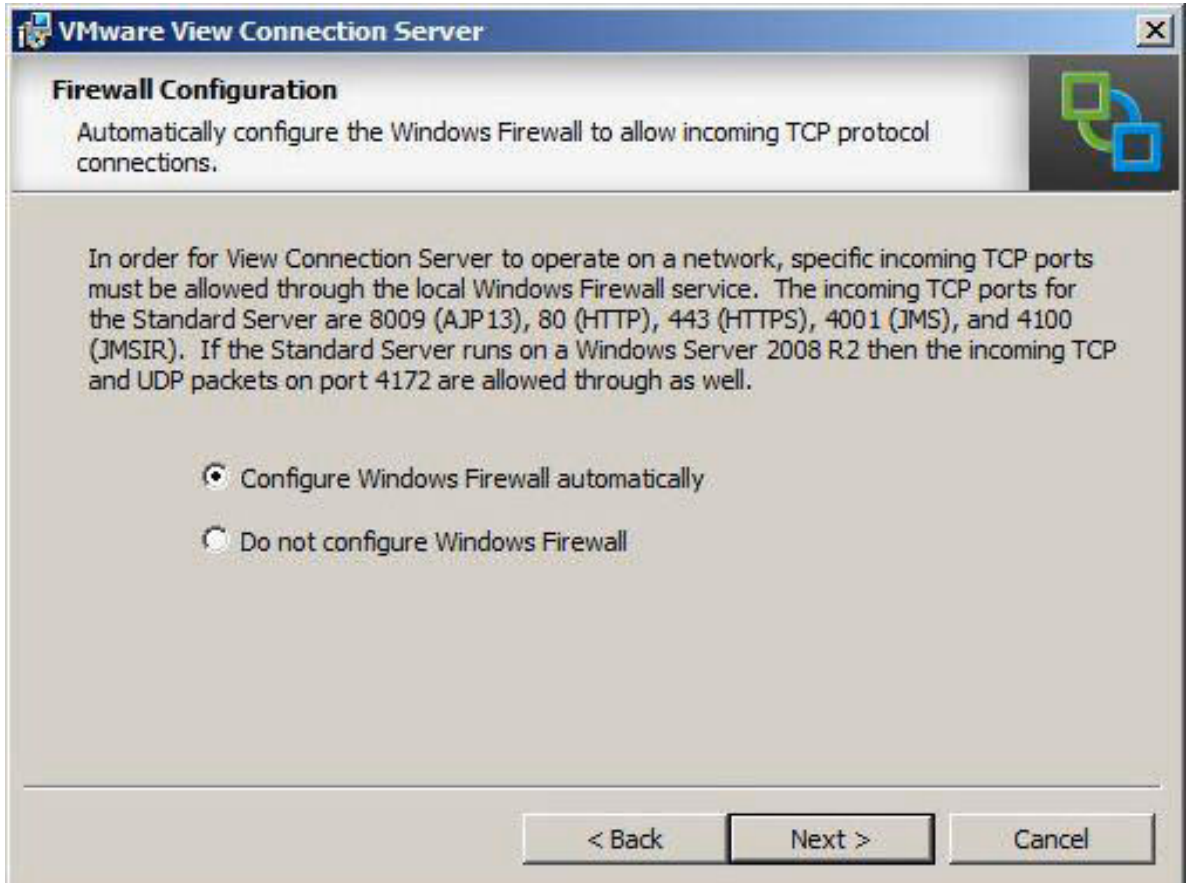
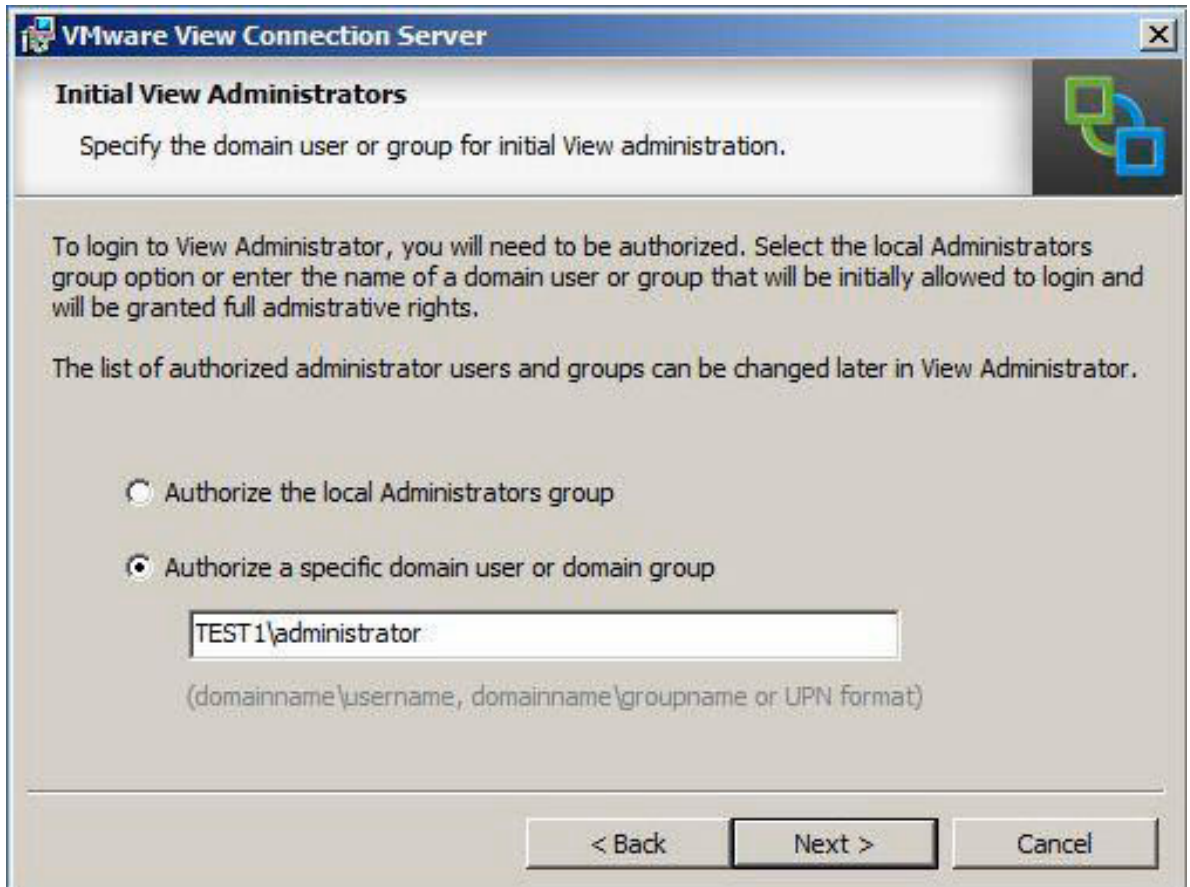


Figure 1.

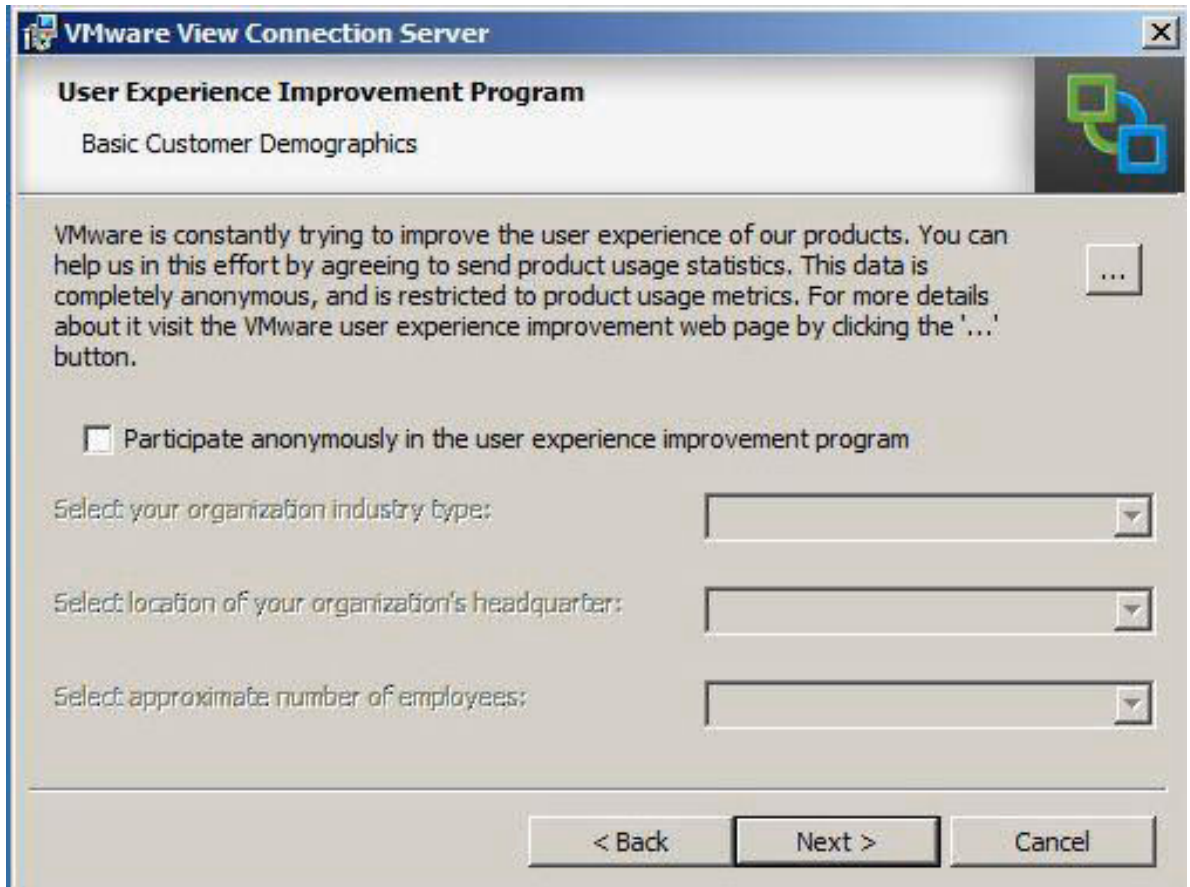
6. To configure the Windows Firewall service, select **Configure Windows Firewall automatically** and click **Next**.



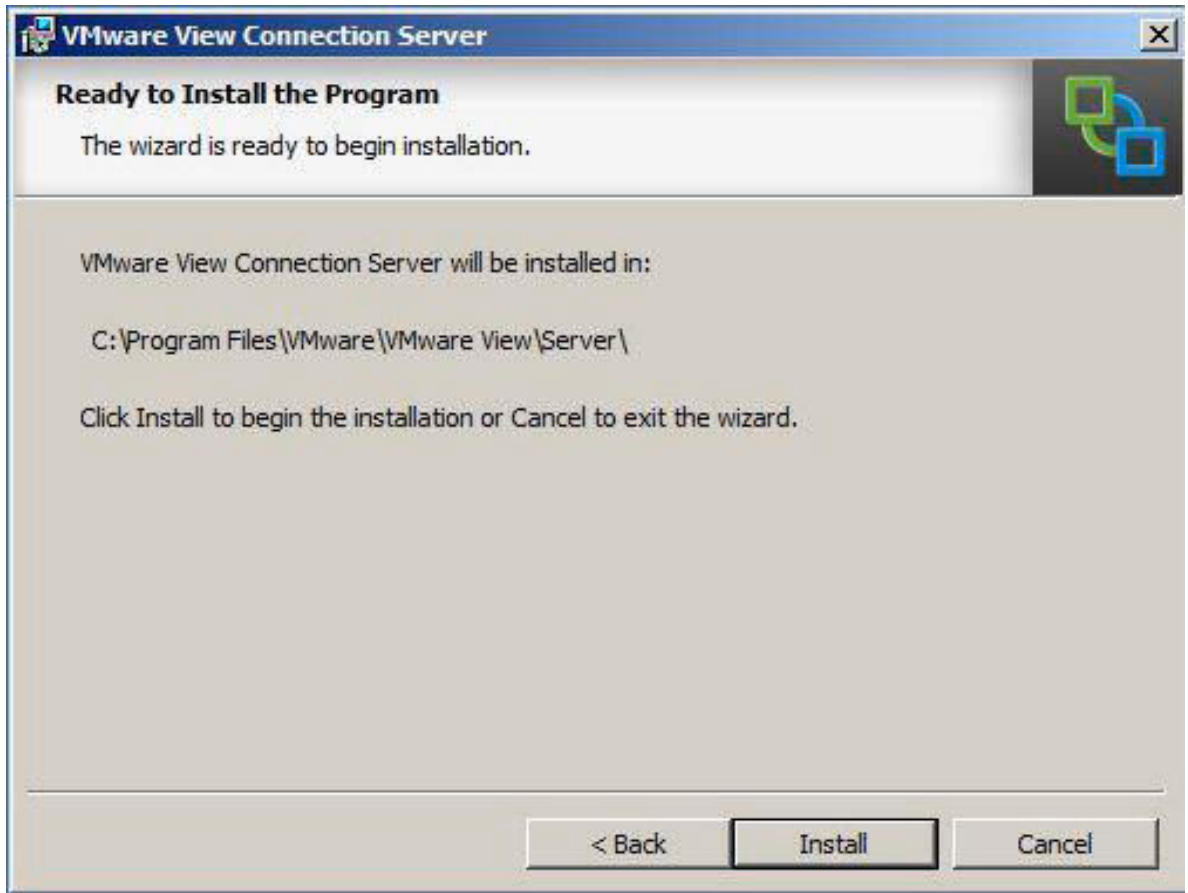
7. Authorize a View Administrator account to grant access to the configuration console, enter the Domain Account or Group created during the prerequisite process and click **Next**.



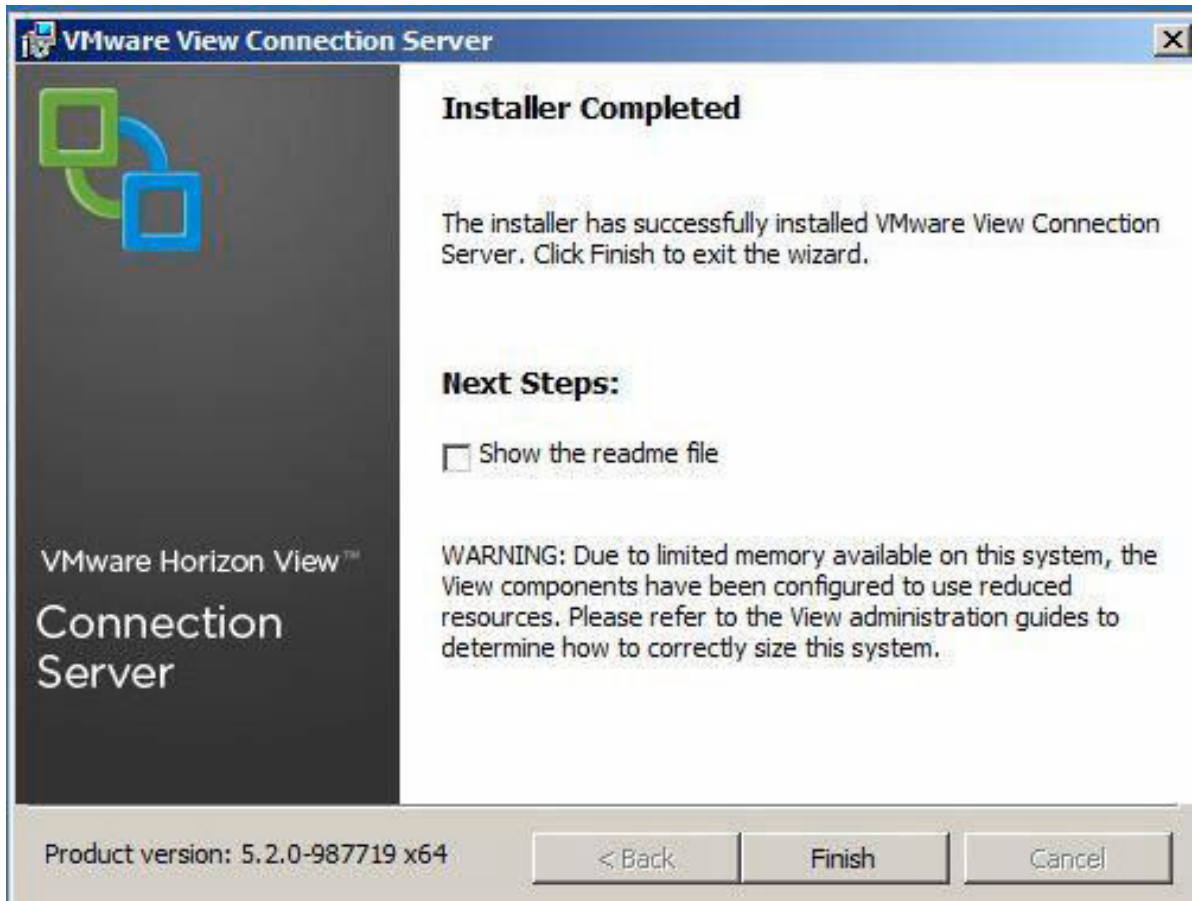
- Optional step. Click **Next**.



9. The installation is ready to start. Click **Install**.



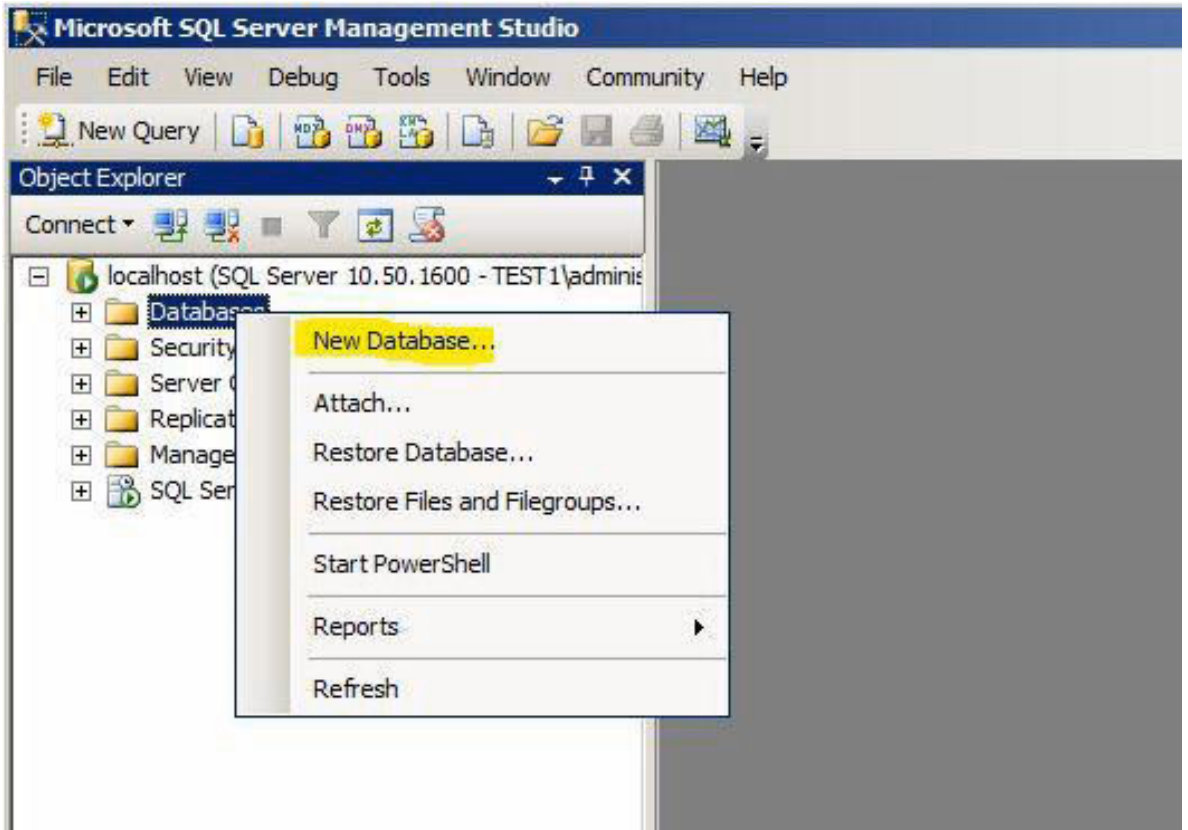
10. After installation is completed, click **Finish**.



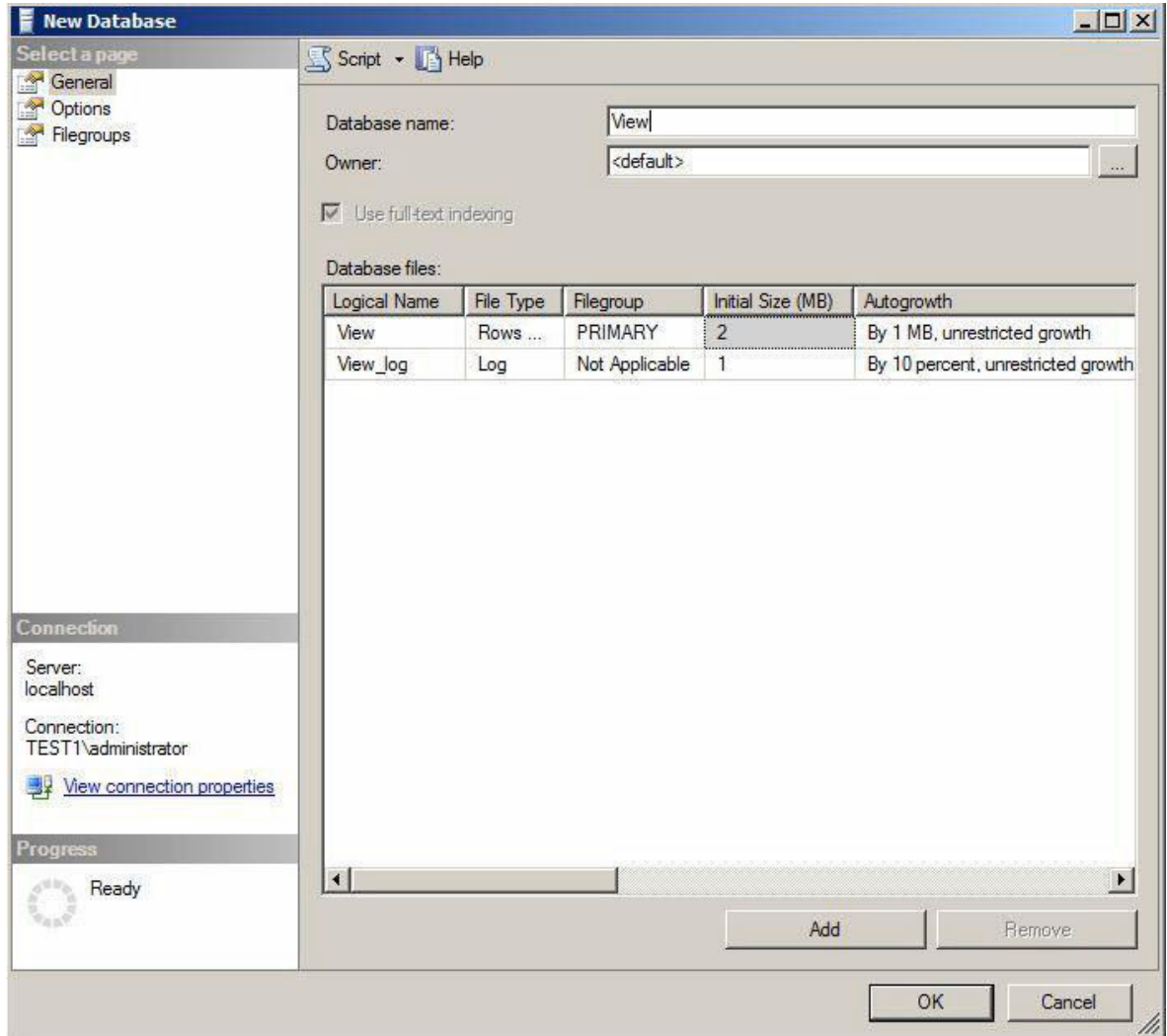
View Composer

The following activities must be performed to complete the pre-requisite steps for the View Composer Setup:

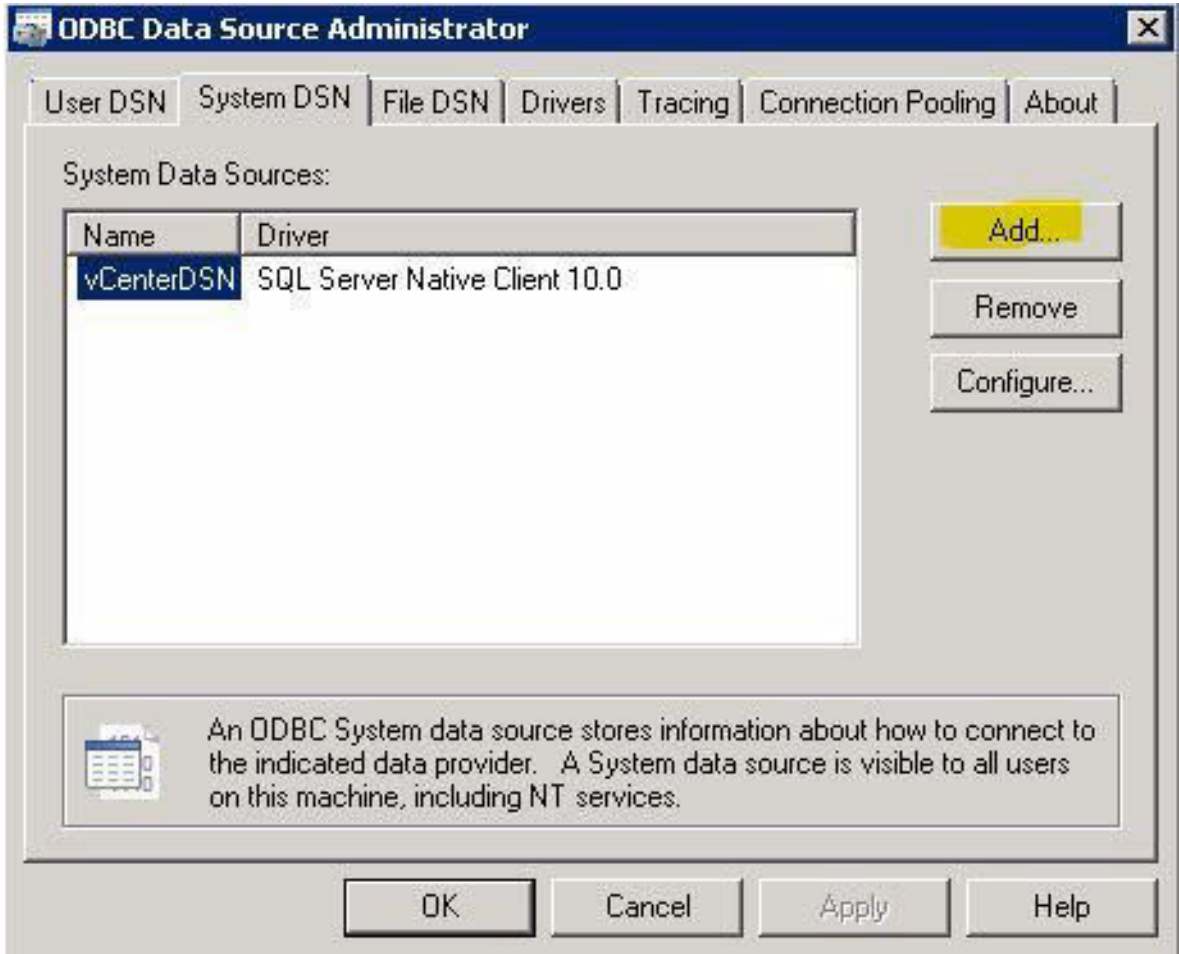
1. Create a SQL Server Database by opening the SQL Server Management Studio Application. Expand the SQL Server node and right-click **Databases** node and click **New Database**.



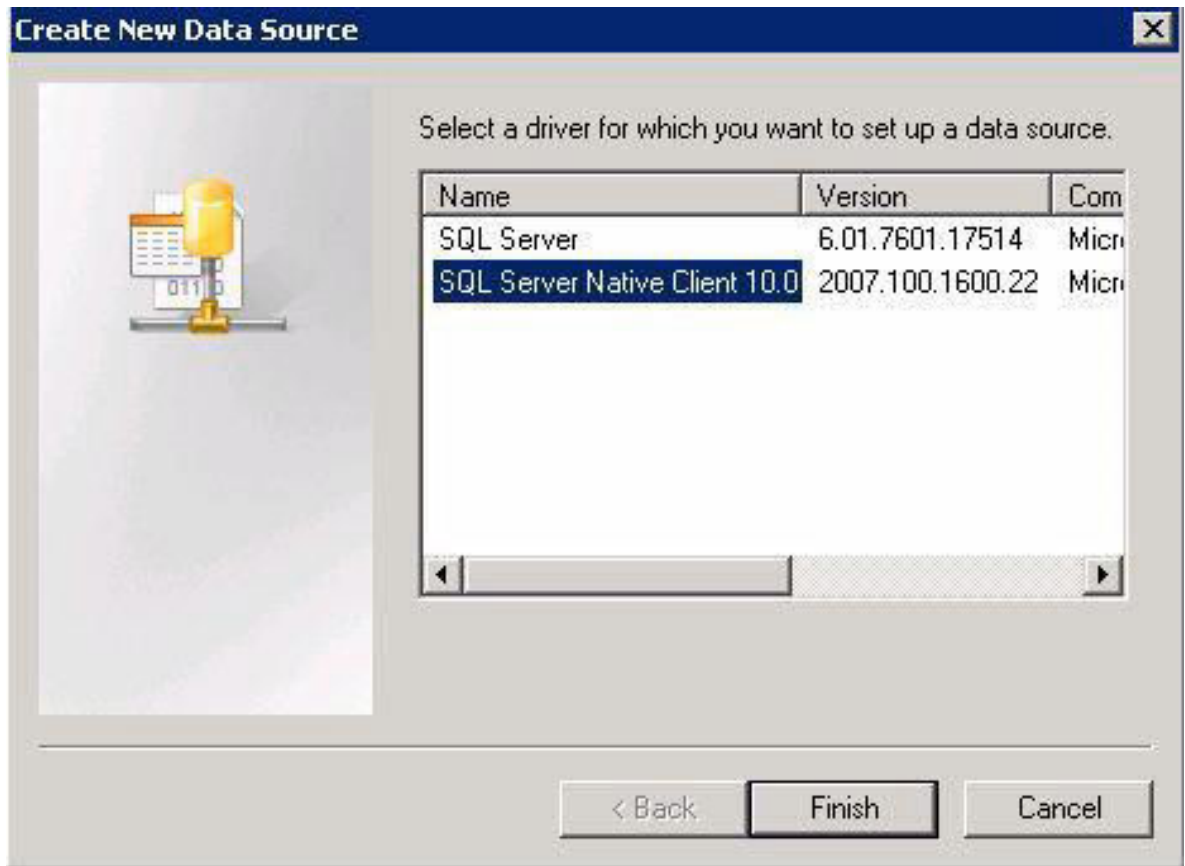
2. Type appropriate database name, configure the database settings as shown in the screenshot here, and then click **OK**.



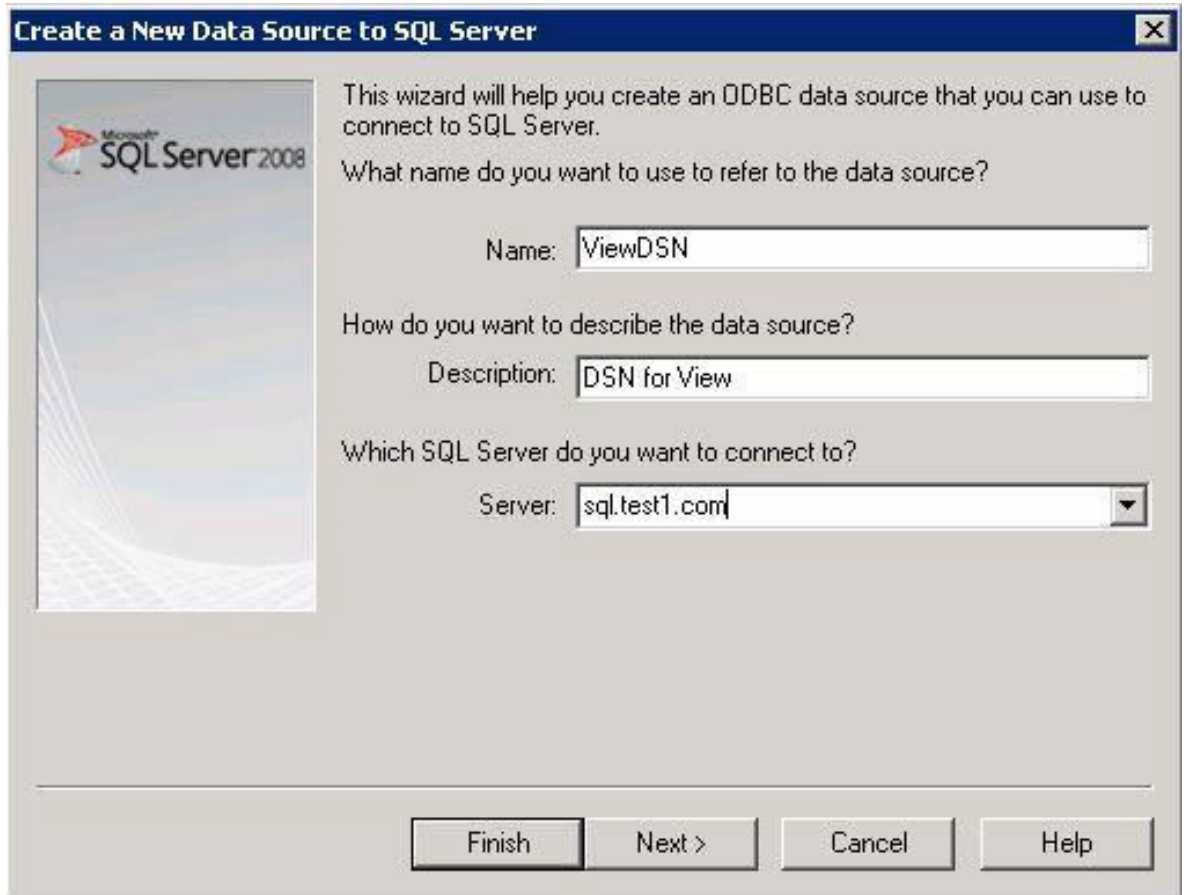
3. On the View Composer server, configure and ODBC connection, by starting the **ODBC Data Source Administrator** application from **Administrative Tools**. Click the **System DSN** tab and click **Add**.



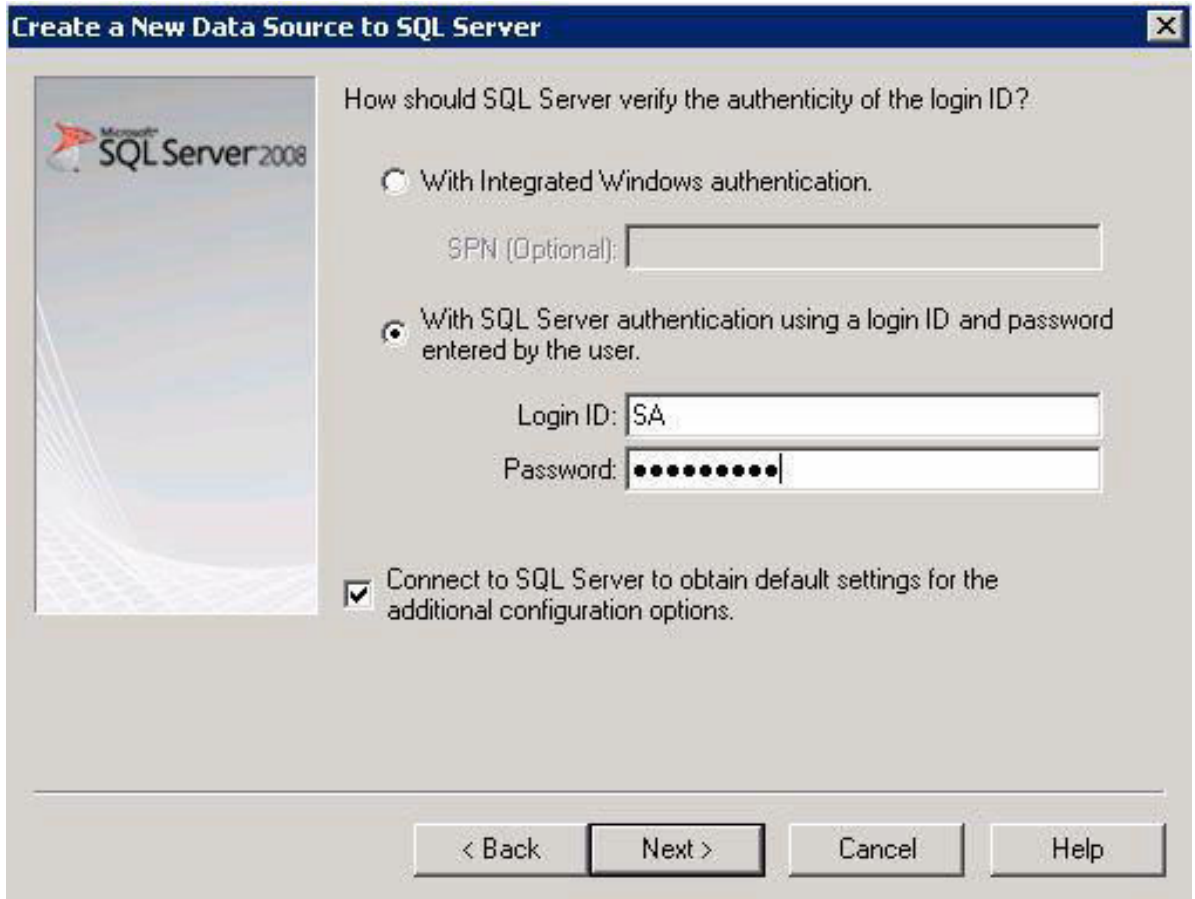
4. Create the new Data Source with the **SQL Server Native Client 10.0** name.



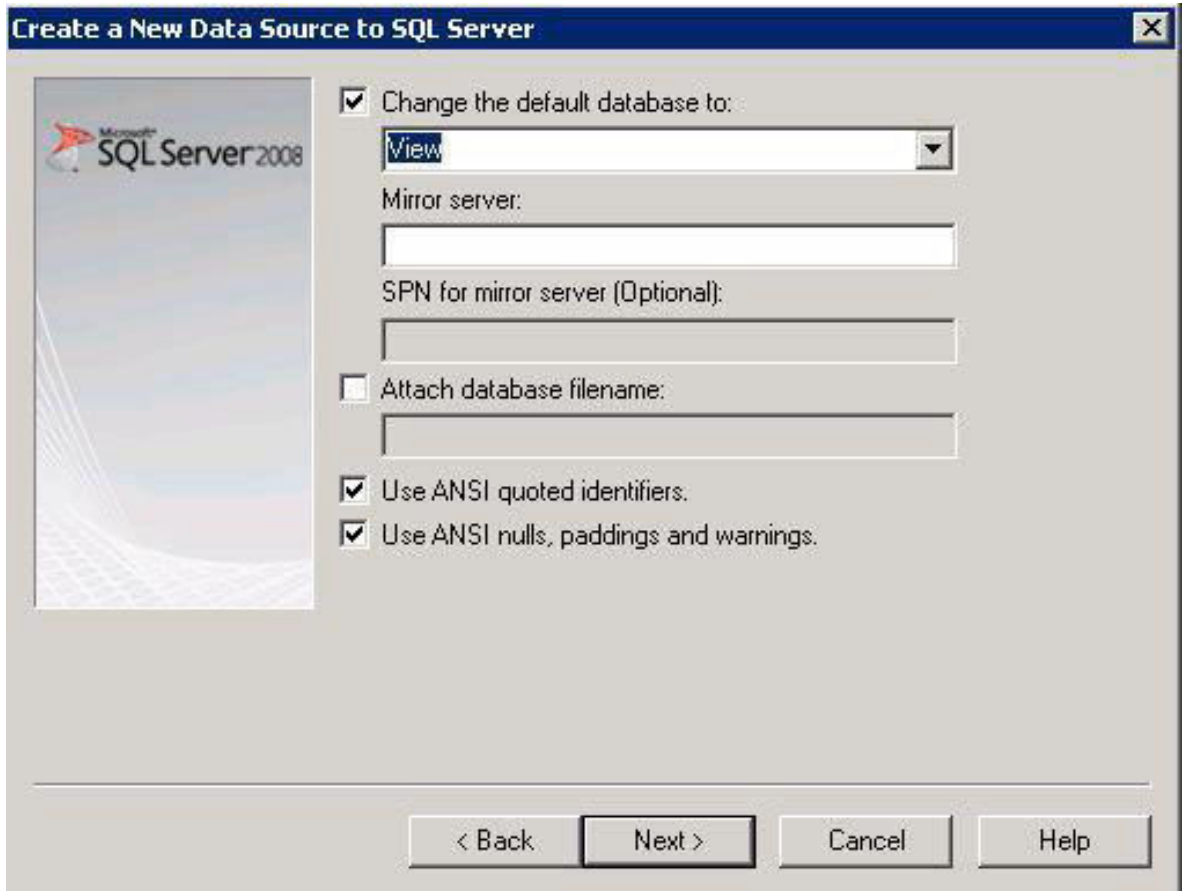
5. Type a system DSN, and then select appropriate SQL Server you want to connect to, and then click Next.



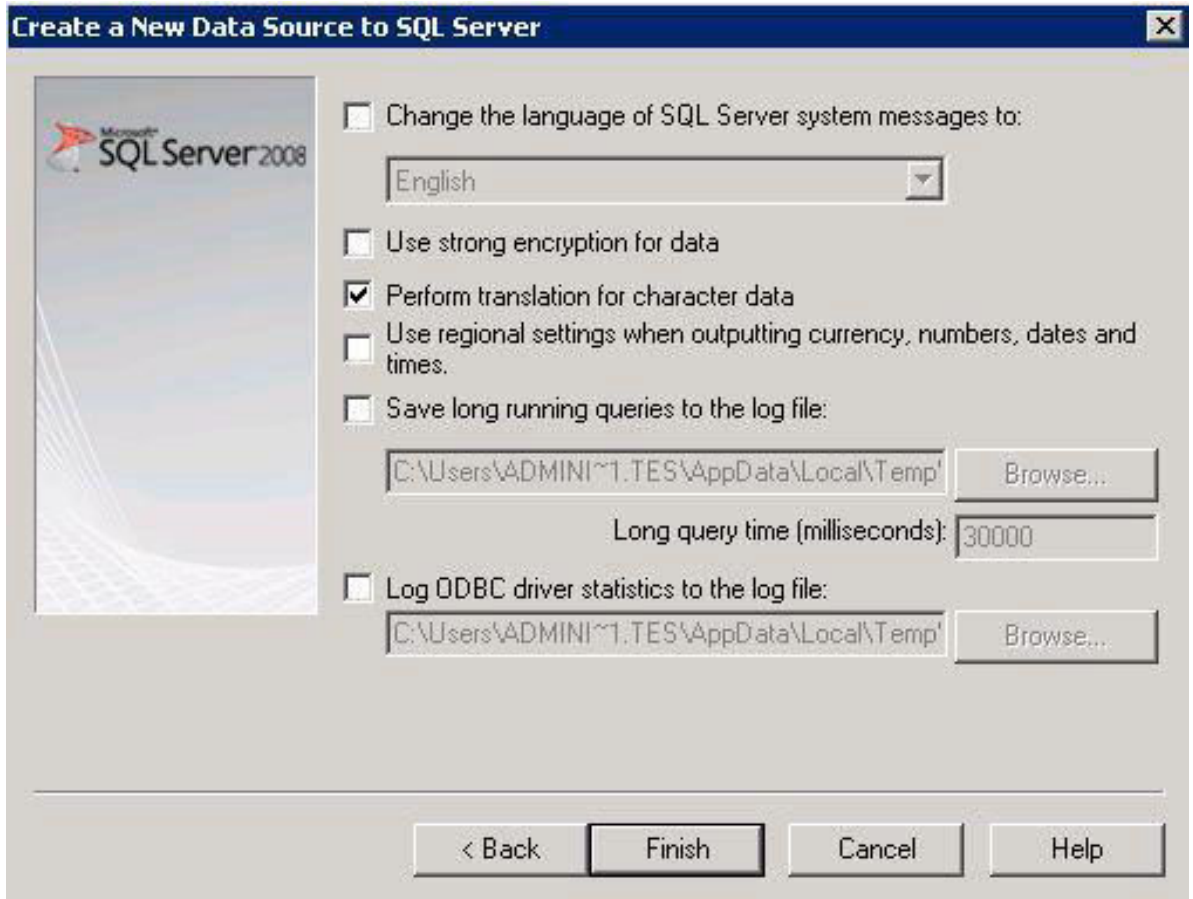
6. Enter credentials for the SQL Database and click **Next**.



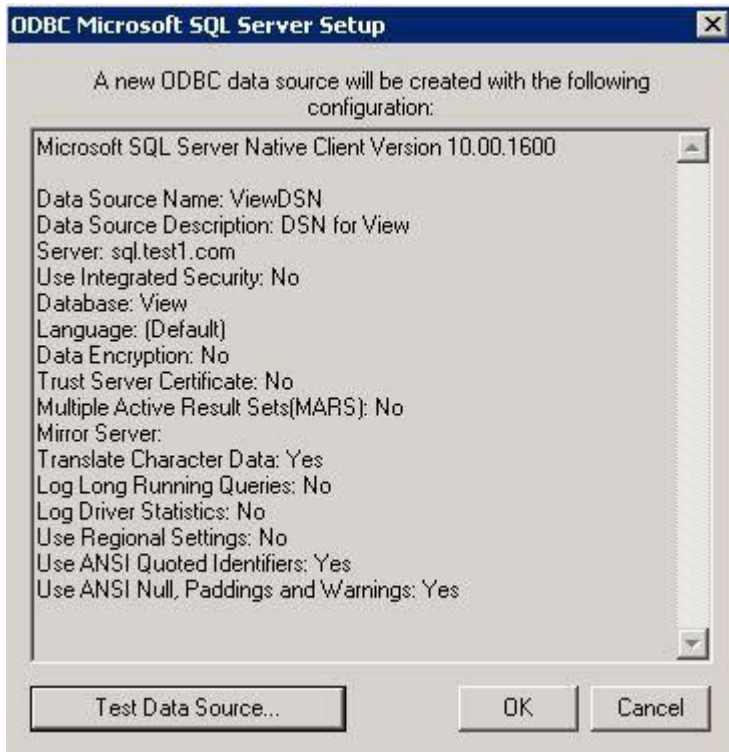
7. If there are multiple databases on the SQL Server, select the **Change the default database to** check box, and then select **View** from the drop-down menu.



8. Leave all default options as is, and then click **Finish**.



9. Click the **Test Data Source** button.



10. After the SQL Server ODBC Data Source test completes successfully, click **OK**.



Figure 2.

Installing VMware View Composer

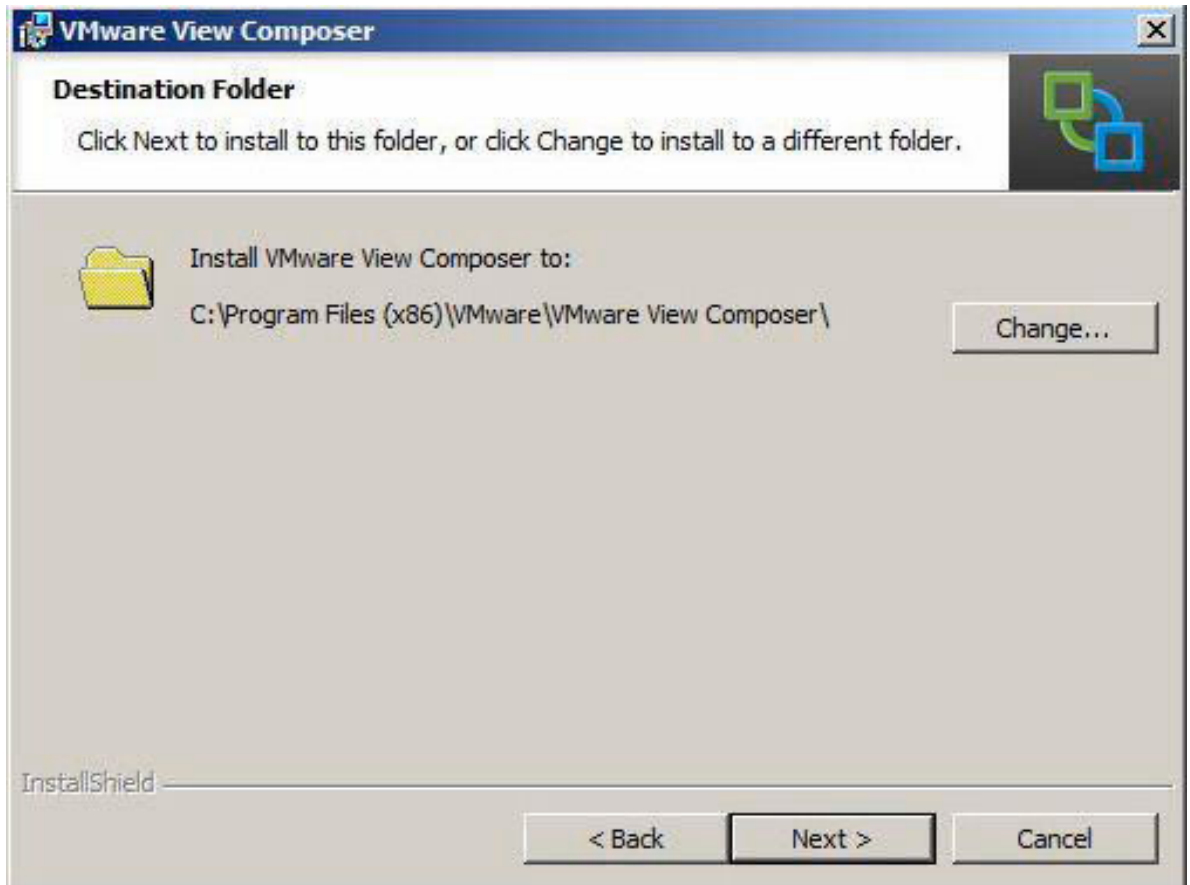
1. Start View Composer Installation process and click **Next**.



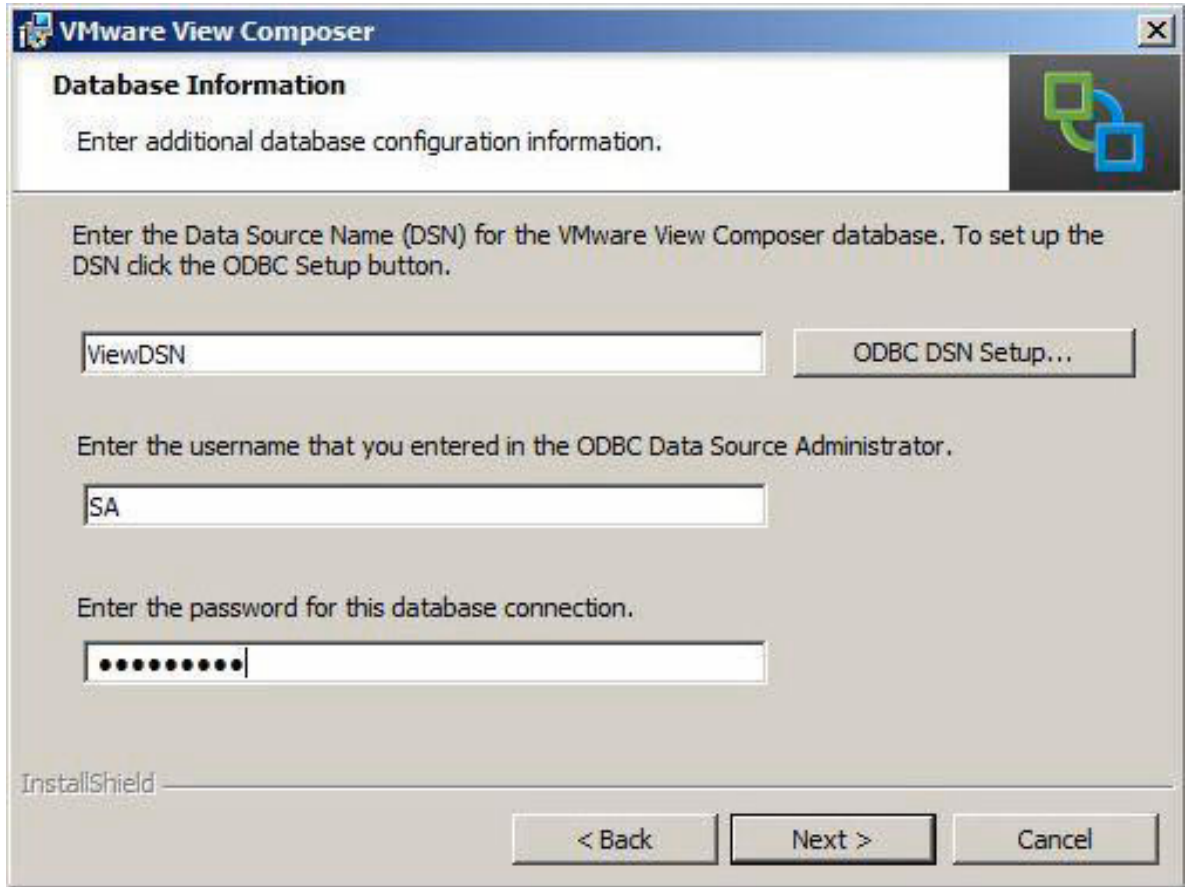
2. Accept VMware EULA and click **Next**.



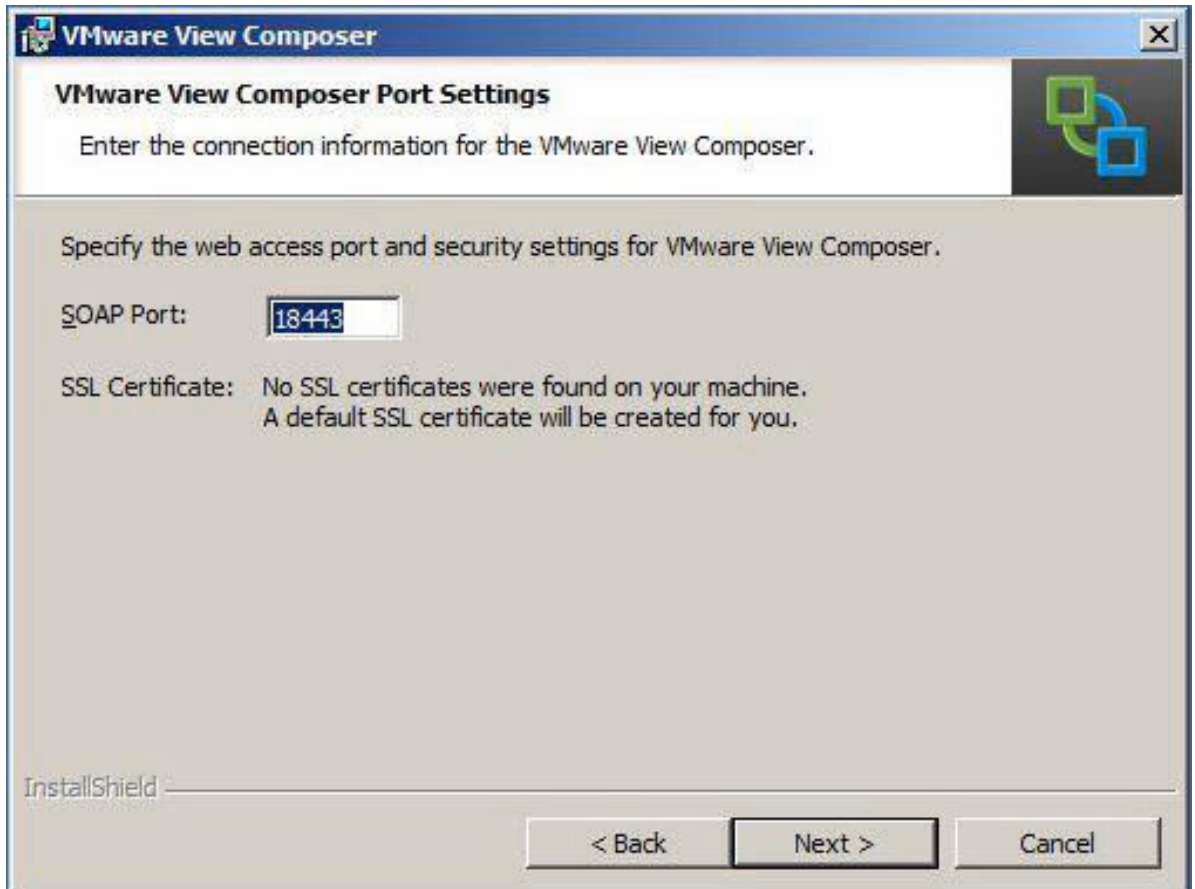
3. Modify or select the default installation destination folder and click **Next**.



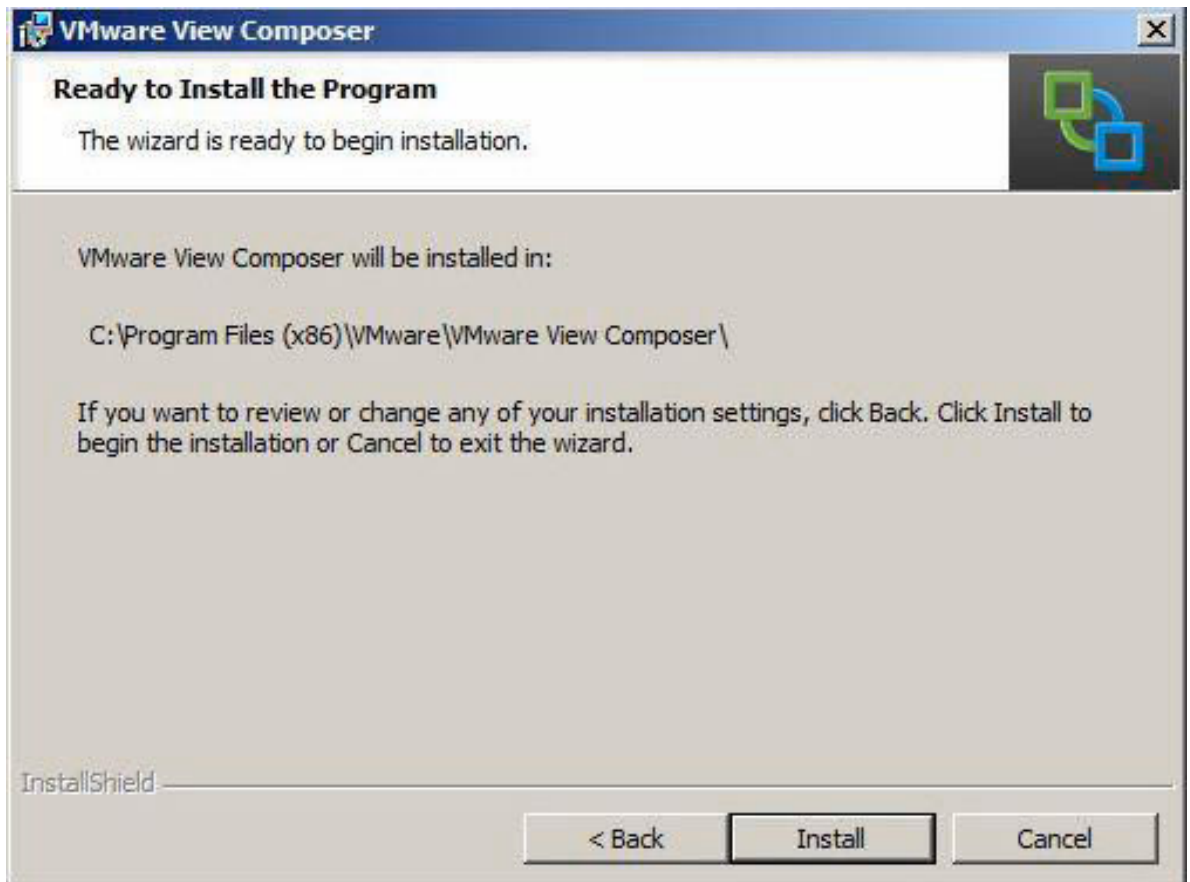
4. Enter the ODBC DSN name, enter the SQL Server database credentials, and then click **Next**.



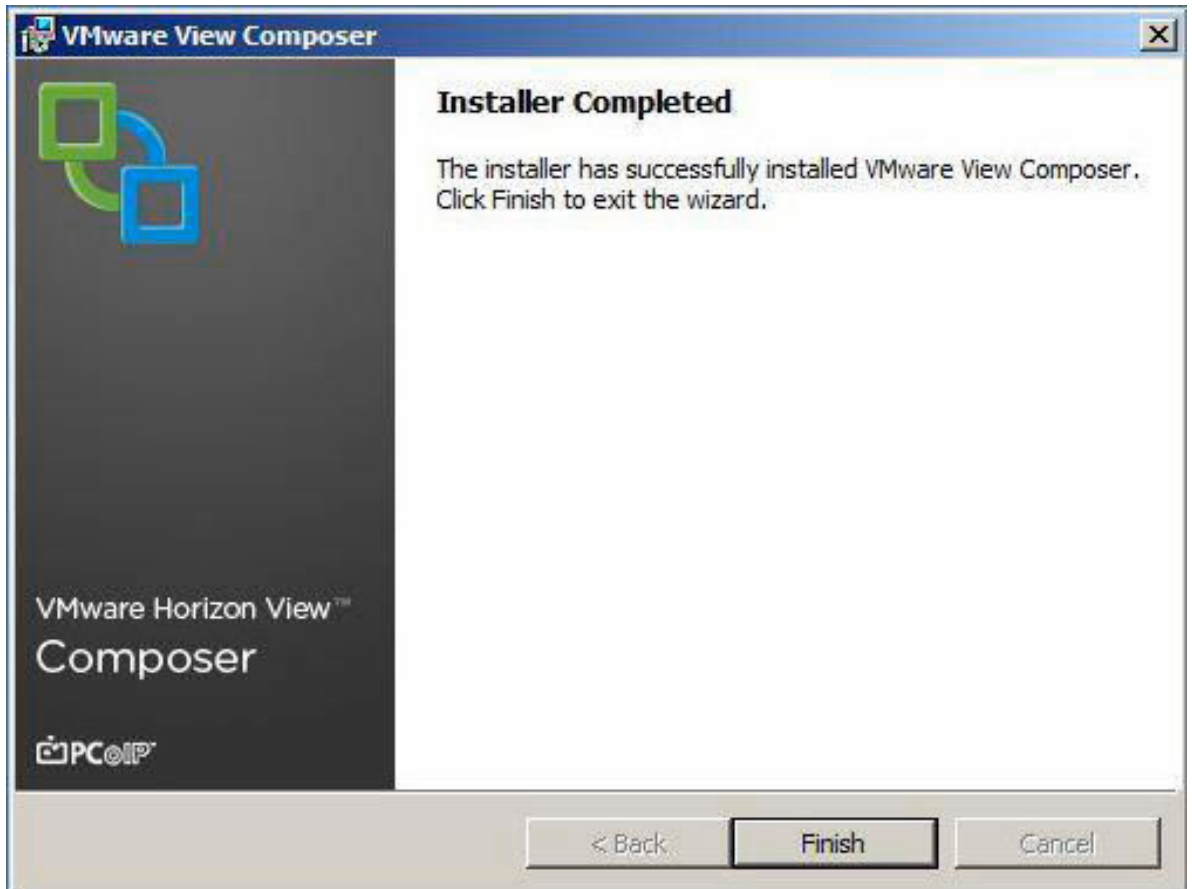
5. Accept the default SOAP Port and click **Next**.



6. On the **Ready to Install the Program** screen, confirm the installation details and click **Install**.



7. After the installation completes, click **Finish**.



Configuring View Composer

To configure the View Composer application:

1. Open the View Administrator console from View Connection server or open a web browser and navigate to [https:// IP Address of View Connection Server/admin](https://IP Address of View Connection Server/admin). Expand **View Configuration** and click **Product Licensing and Usage**. In the working pane, click **Edit License**.

The screenshot shows the VMware Horizon View Administrator interface. The top navigation bar is blue with the text "VMware Horizon View Administrator". Below the bar, there is a status bar showing "Updated 5/15/2013 11:12 AM" and a refresh icon. The main content area is divided into two sections: "Licensing and Usage".

The "Licensing" section contains a yellow "Edit License..." button and a warning message: "No valid license present for View Manager. Click Edit to add a valid license." Below this is the "Usage" section, which includes a "Reset Highest" button and a table showing session usage.

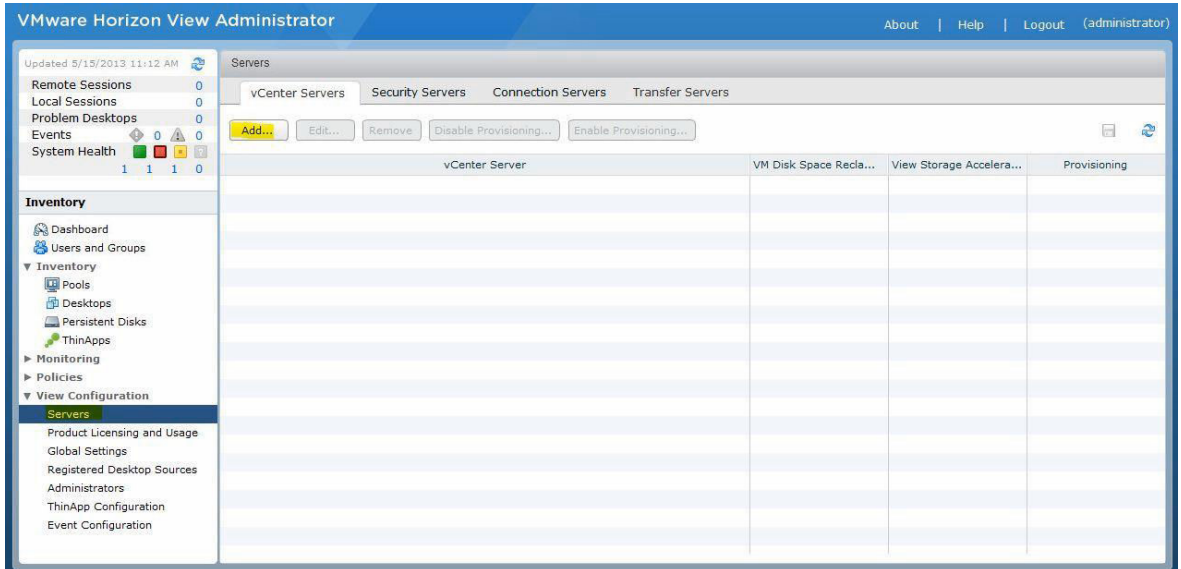
Session Mode	Current	Highest
Total Remote	0	0
Active - full virtual machi	0	0
Active - linked clone	0	0
Active - other desktop sc	0	0
Local	0	0

The left sidebar contains a navigation menu with the following items: Dashboard, Users and Groups, Inventory (expanded), Monitoring, Policies, and View Configuration (expanded). Under View Configuration, the "Servers" item is highlighted, and "Product Licensing and Usage" is selected.

2. Enter the appropriate license key and click **OK**.

The screenshot shows the "Edit License" dialog box. It has a title bar "Edit License" and a text input field labeled "License serial number:" with a red asterisk indicating it is required. The input field is empty. At the bottom right, there are "OK" and "Cancel" buttons.

3. Under **View Configuration**, click **Servers**, and then click **Add** to add vCenter Server to the configuration.



4. Enter the vCenter Server address, login credentials, and advanced settings as shown in the sample screenshot here.

Add vCenter Server

Add vCenter Server

VC Information
View Composer
Storage
Ready to Complete

vCenter Server Information

vCenter Server Settings

Server address:

User name:

Password:

Description:

Port:

Advanced Settings

Specify the concurrent operation limits.

Max concurrent vCenter provisioning operations:

Max concurrent power operations:

Max concurrent View Composer maintenance operations:

Max concurrent View Composer provisioning operations:

vCenter Server Settings

Before you add vCenter Server to View, install a valid SSL certificate signed by a trusted CA. In a test environment, you can use the default, self-signed certificate that is installed with vCenter Server, but you must accept the certificate thumbprint.

Provide the vCenter Server FQDN or IP address, user name, and password.

Concurrent Operations Limits

Max concurrent vCenter provisioning operations: the maximum number of concurrent VM cloning and deletion operations on this vCenter server (full clones).

Max power operations: the maximum number of concurrent VM power-on, power-off, reset, and configuration operations (full clones and linked clones).

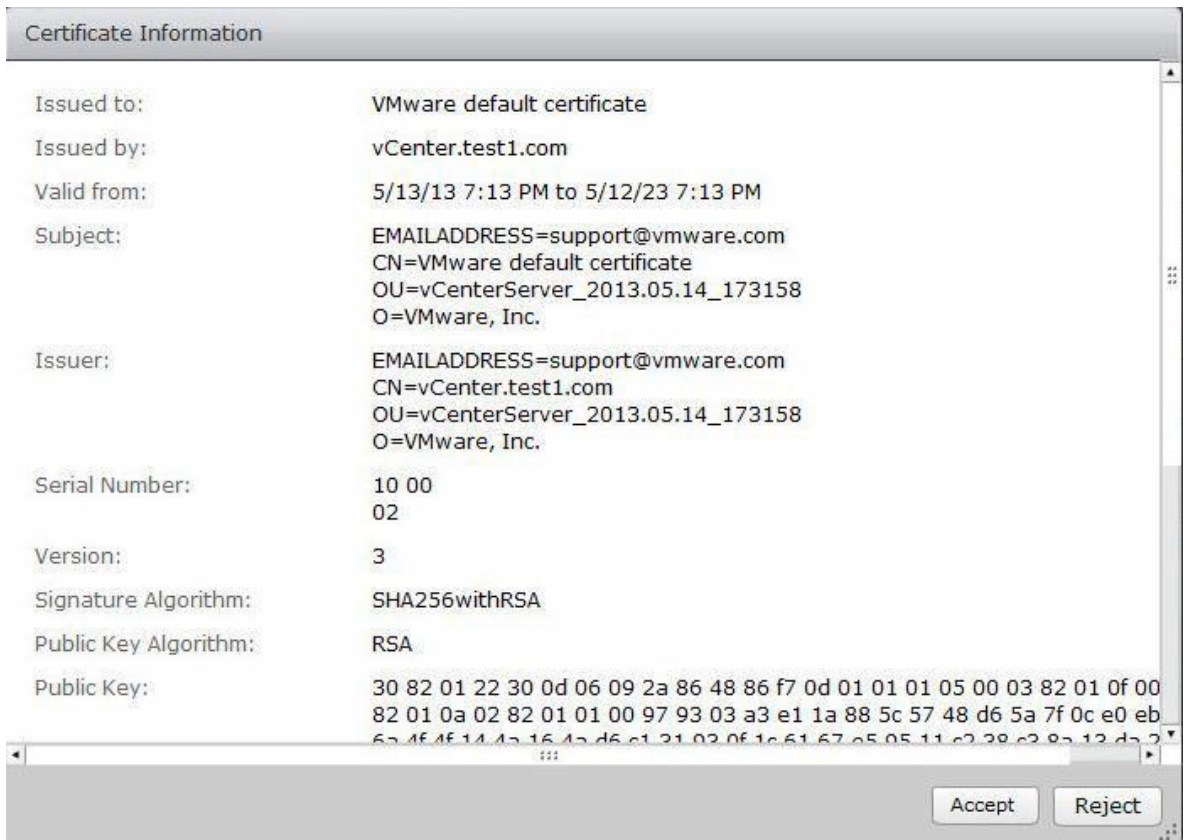
Max View Composer maintenance operations: the maximum number of concurrent View Composer

Next > Cancel

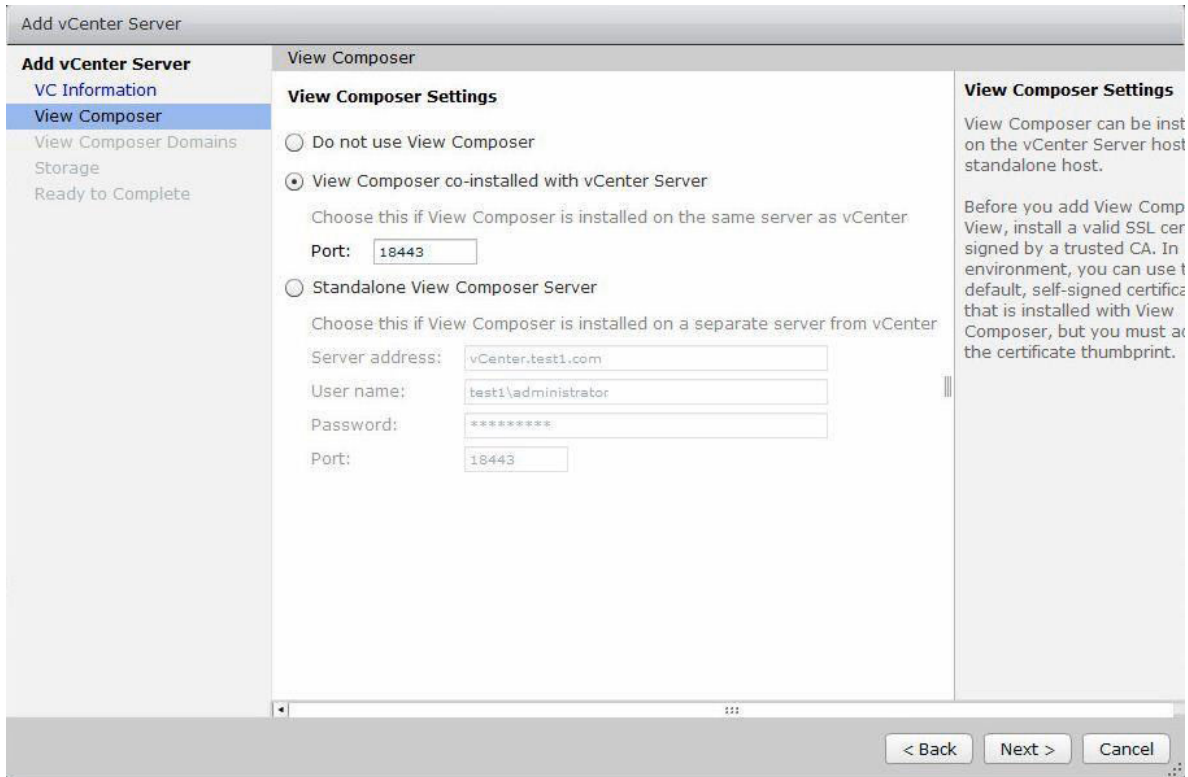
5. The certificate will not be trusted by default. Click **View Certificate**.



6. To trust this certificate, click **Accept**.



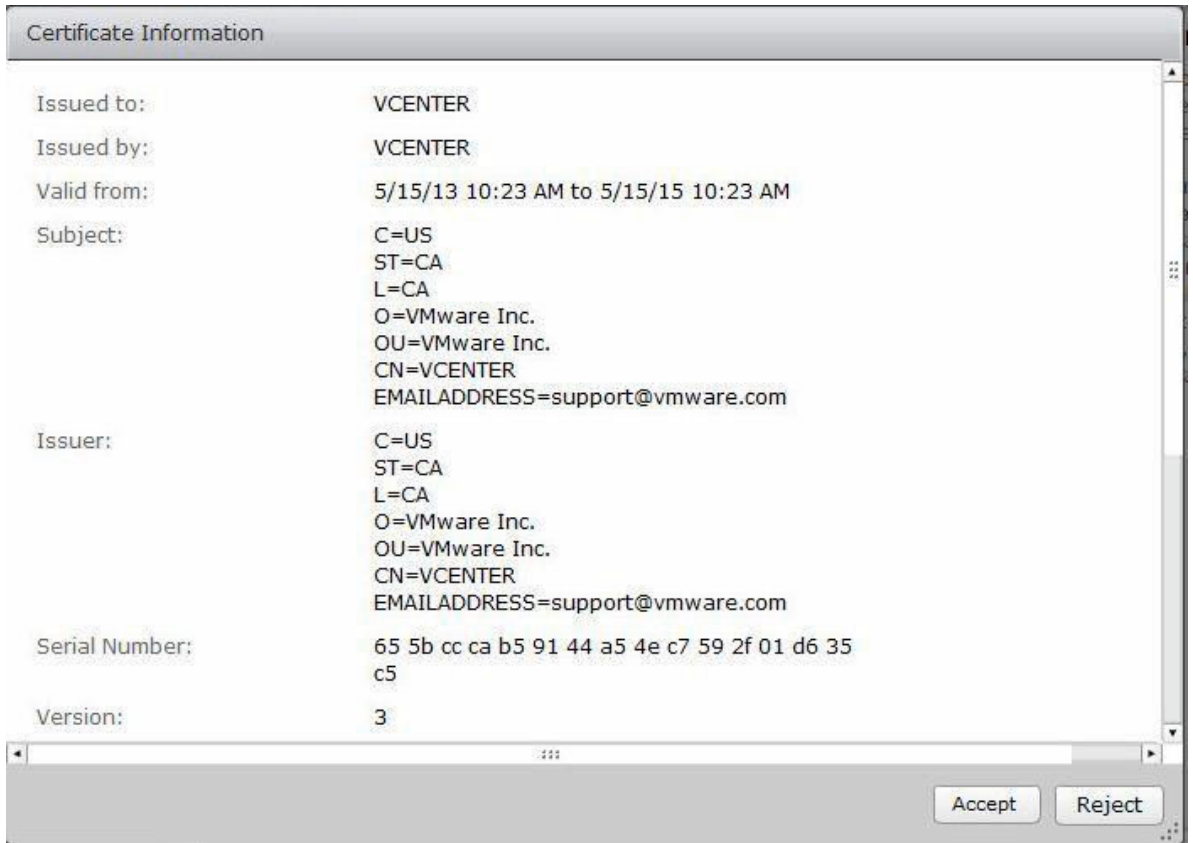
7. Because we have installed **View Composer on vCenter server**, select **View Composer co-installed with vCenter Server**, and then click **Next**.



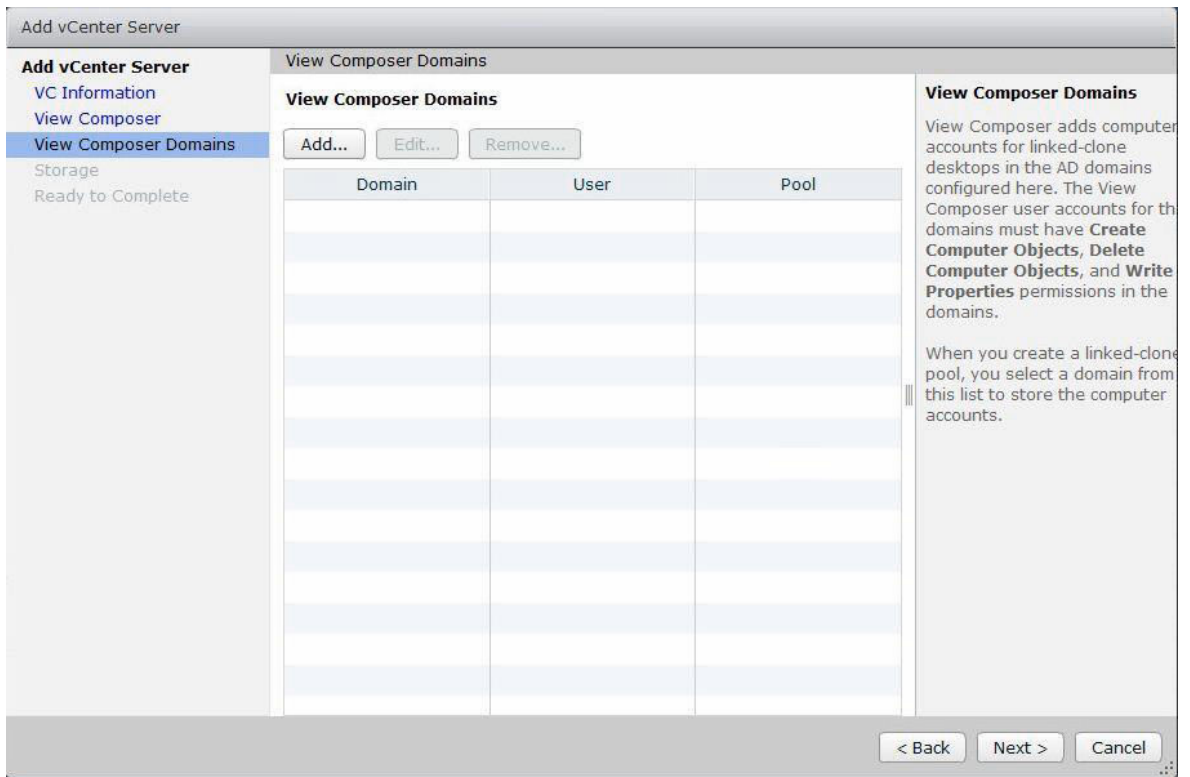
- The certificate will not be trusted by default. Click **View Certificate**.



- To trust this certificate, click **Accept**.

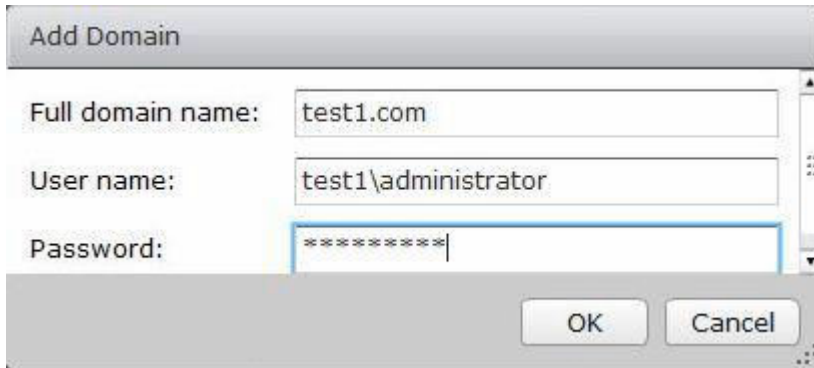


10. Click **Add** to add view composer domains.

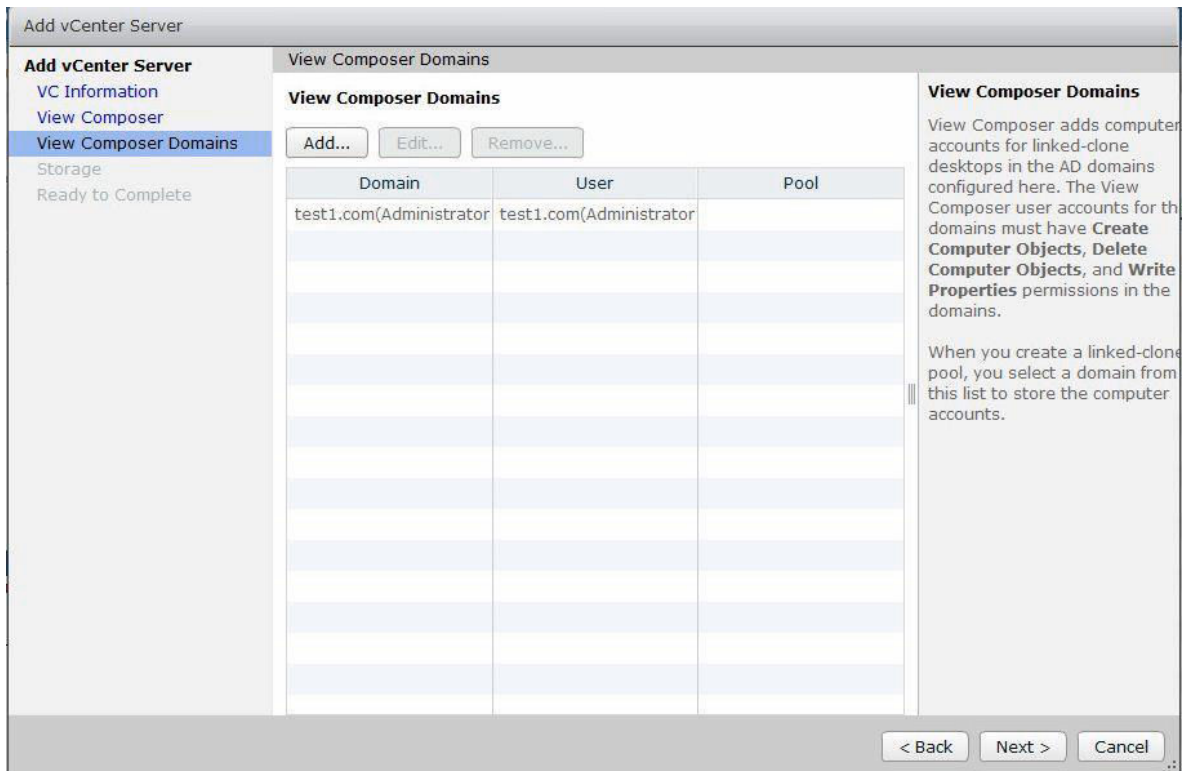


11. Enter the domain name and password as shown in the screenshot here, and then click **OK**.

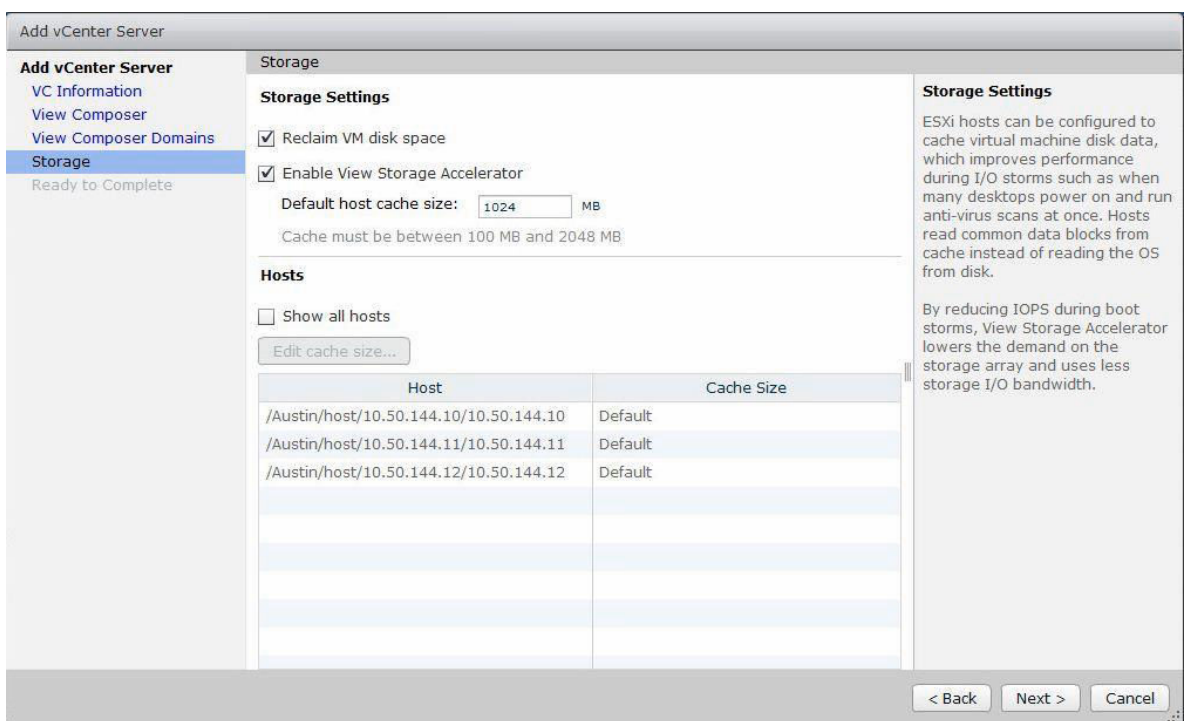
f



12. Click **Next**.



13. Accept default settings and click **Next**.



14. Click **Finish**.

Add vCenter Server

Add vCenter Server	Ready to Complete	
VC Information	vCenter Server	vcenter.test1.com
View Composer	User name	test1\administrator
View Composer Domains	Password	*****
Storage	Description	vCenter Server
Ready to Complete	Server Port	443
	Max Provision	20
	Max Power	50
	Max View Composer Operations	12
	Max View Composer Provision	8
	View Composer State	View Composer co-installed with vCenter Server
	View Composer Address	vcenter.test1.com
	View Composer Password	*****
	View Composer User Name	test1\administrator
	View Composer Port	18443
	Enable View Storage Accelerator	Yes
	Default host cache size:	1024
	VM Disk Space Reclamation	Yes

< Back Finish Cancel

15. For logging the events on VMware View Horizon View, setup **Event Configuration** by expanding **View Configuration**, clicking **Event Configuration**, and then clicking **Edit**.

VMware Horizon View Administrator

Updated 5/15/2013 12:13 PM

Remote Sessions 0
Local Sessions 0
Problem Desktops 0
Events 0
System Health 1 1 1 0

Inventory
Dashboard
Users and Groups
Inventory
Pools
Desktops
Persistent Disks
ThinApps
Monitoring
Policies
View Configuration
Servers
Product Licensing and Usage
Global Settings
Registered Desktop Sources
Administrators
ThinApp Configuration
Event Configuration

Event Configuration

Event Database
Edit...

No database has been defined, events will not be recorded. Click 'Edit...' to specify a database server.

Event Settings
Event settings cannot be configured until a database server has been specified.

Syslog
Configure syslog event logging using one or more methods below. Use of this feature on an unsecured network is not recommended.

Send to syslog servers: Add...

Log to file: Enable

Copy to location: Add...

16. Enter Database details and click **OK**.

Edit Event Database

Database server:

Database type:

Port:


Database name:

User name:

Password:

Confirm password:

Table prefix:

 **NOTE:** Ideally in a production environment, you can create a separate database for event configuration. Because this is a test environment, we are going to use view composer database.

Gold Image Preparation

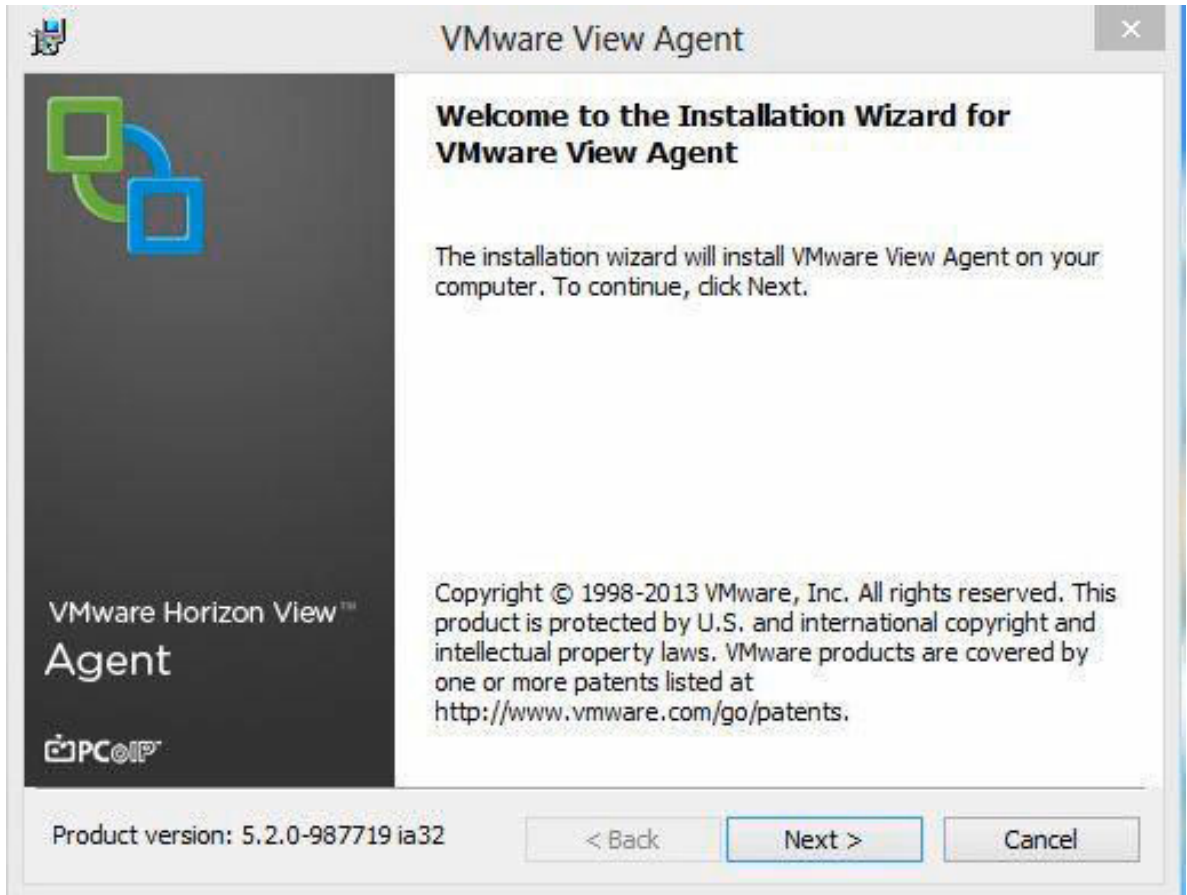
Windows 8 (A Example)

Do the following on the Windows 8 base image:

1. Create Base Image VM and Install Windows 8 OS
2. Join VM to the domain.
3. Install the latest Windows updates.
4. Install the required applications.
5. Install VMware View Agent.

Installing VMware View Agent

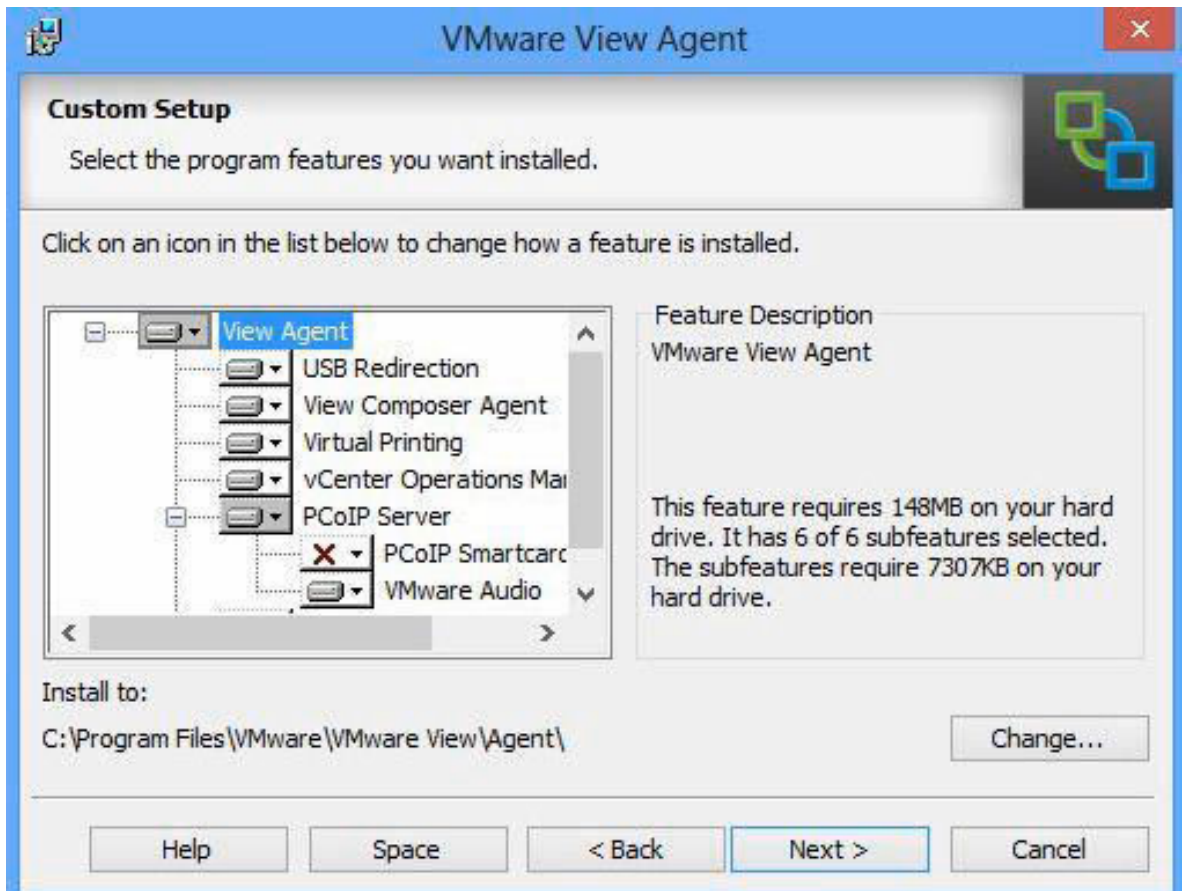
1. Start VMware View Agent Installation media and click **Next**.



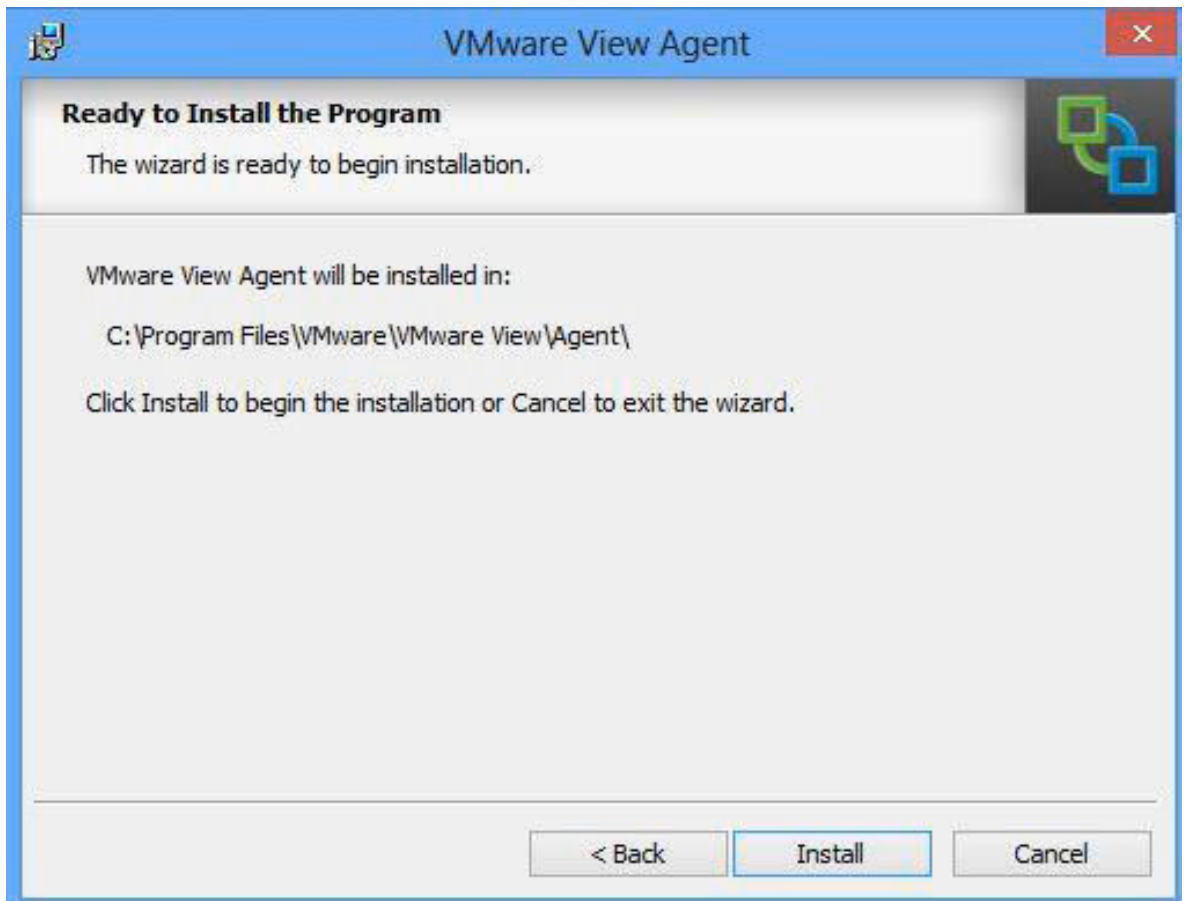
2. Accept VMware EULA and click **Next**.



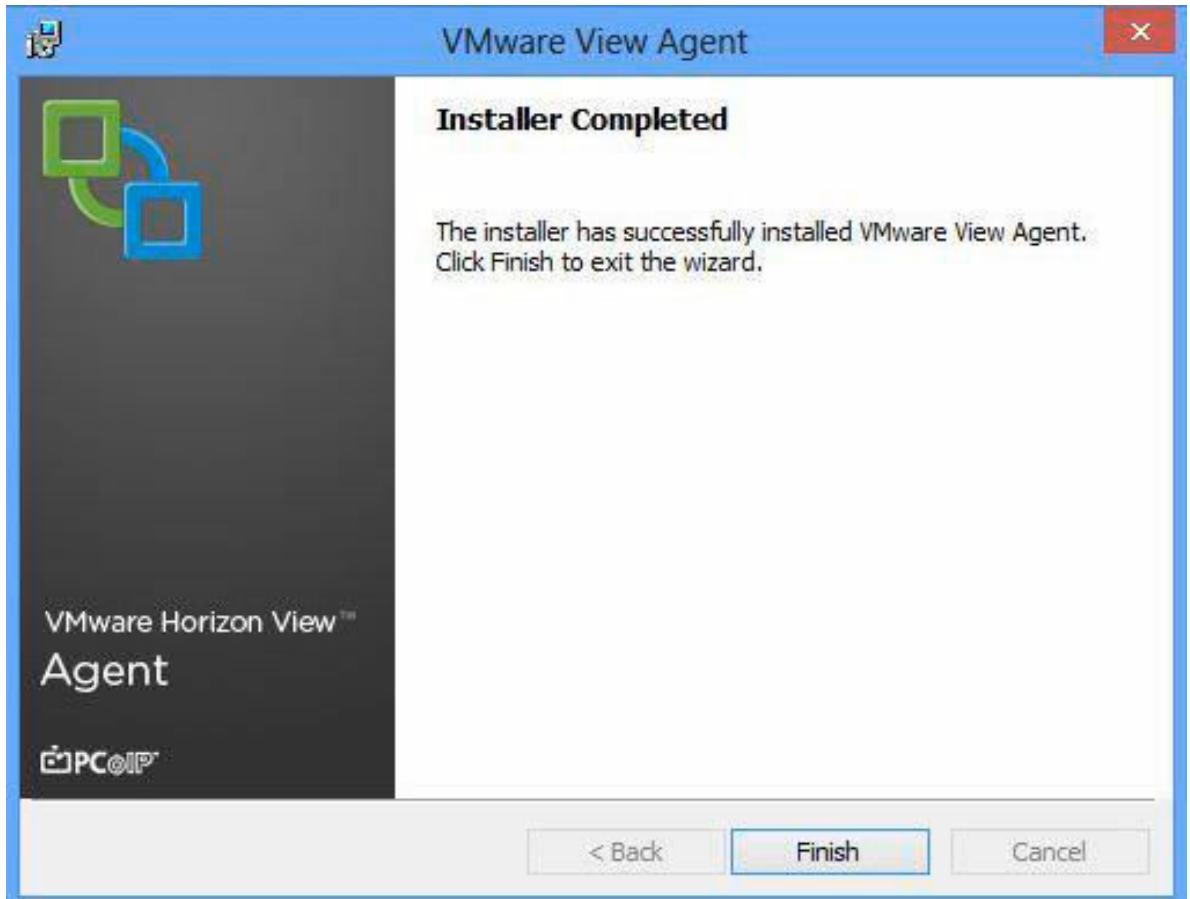
3. Accept default settings and click **Next**.



4. Modify or select the default installation destination folder and click **Install**.



5. Click **Finish**.



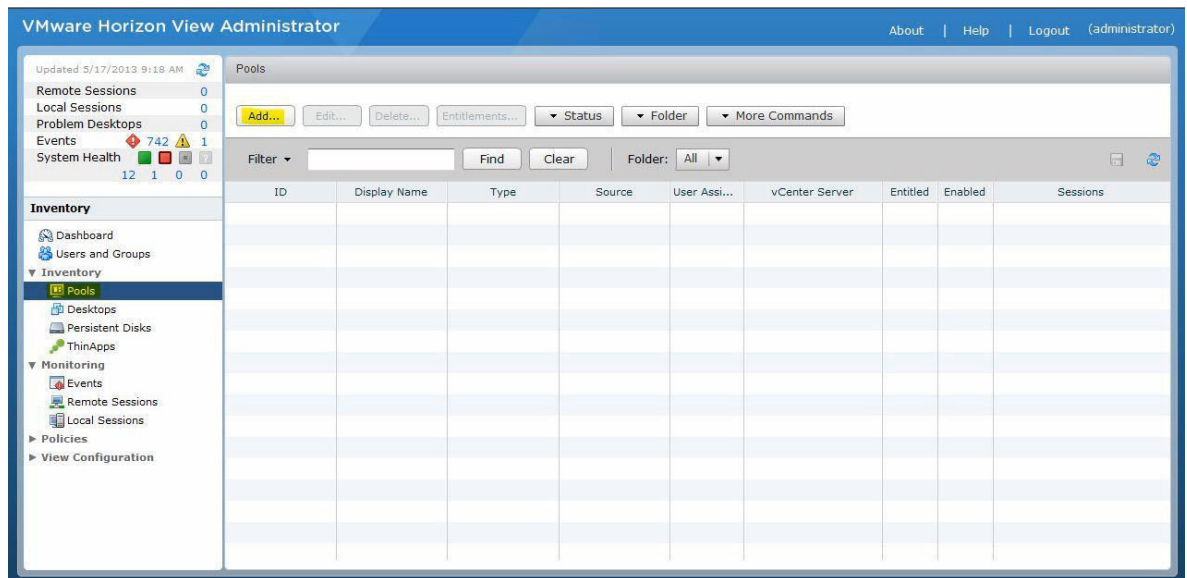
6. Optimizing Windows 8

Windows 8 VM must be optimized in order to provide a more responsive desktop for the end user and to disable any services that are not relevant to a virtual desktop scenario. The following document was used to optimize the base image.

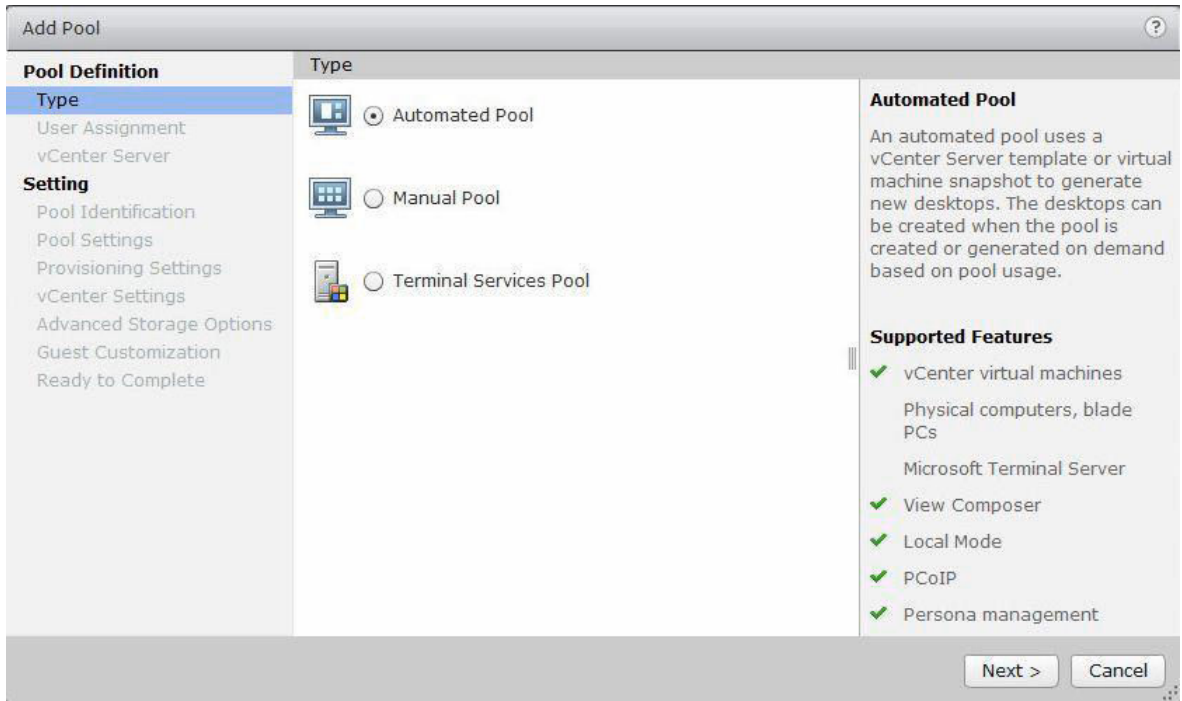
Pool Deployment

To create and assign a desktop pool to a group of users:

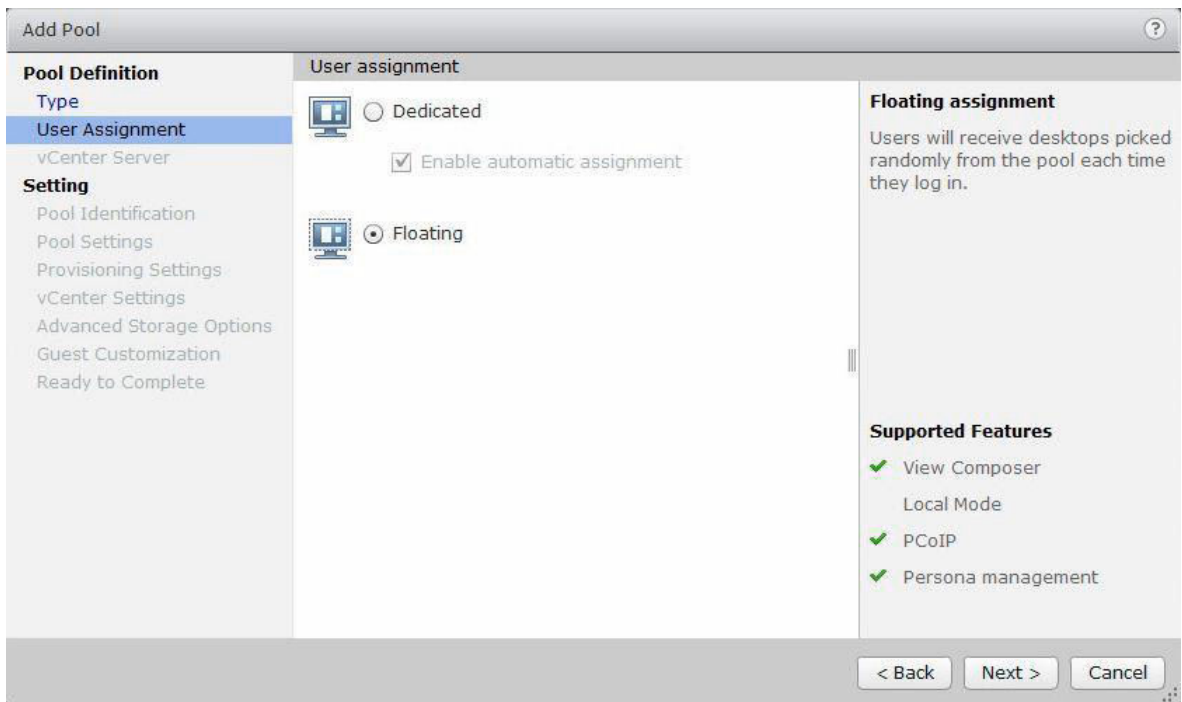
1. Log in to View Administrator with administrator privileges. The **VMware Horizon View Administrator** page is displayed. To create a desktop pool, in the left pane, click **Pools** under **Inventory**.



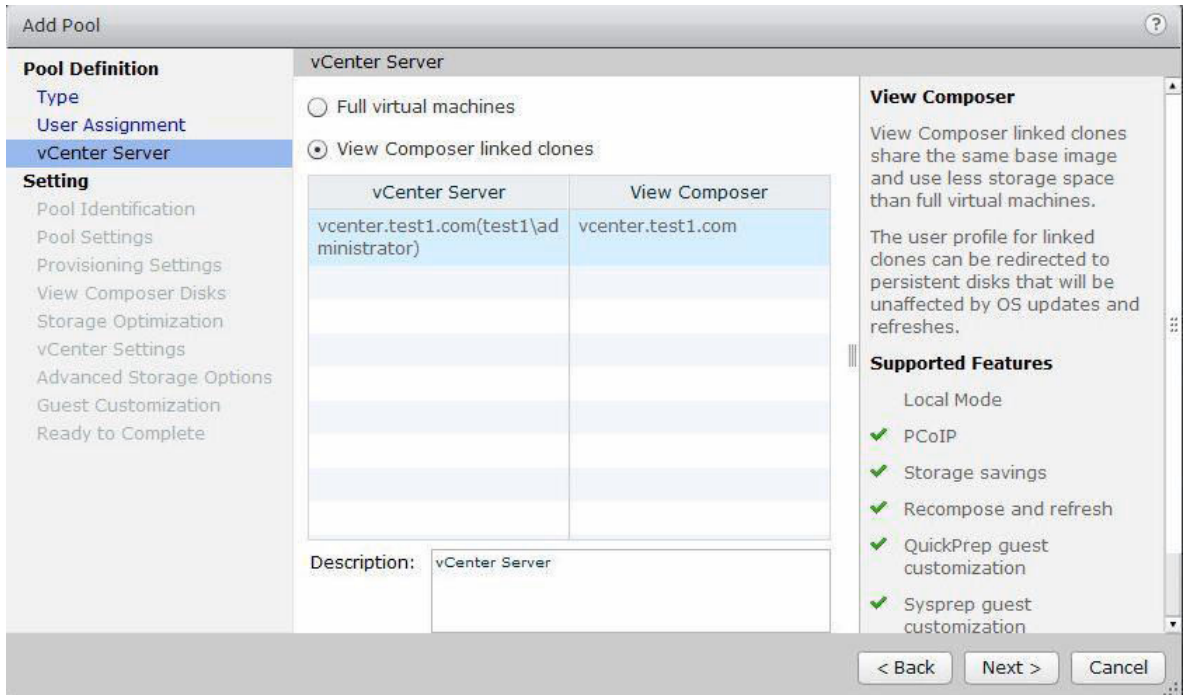
2. Select **Automated Pool** from the list and click **Next**.



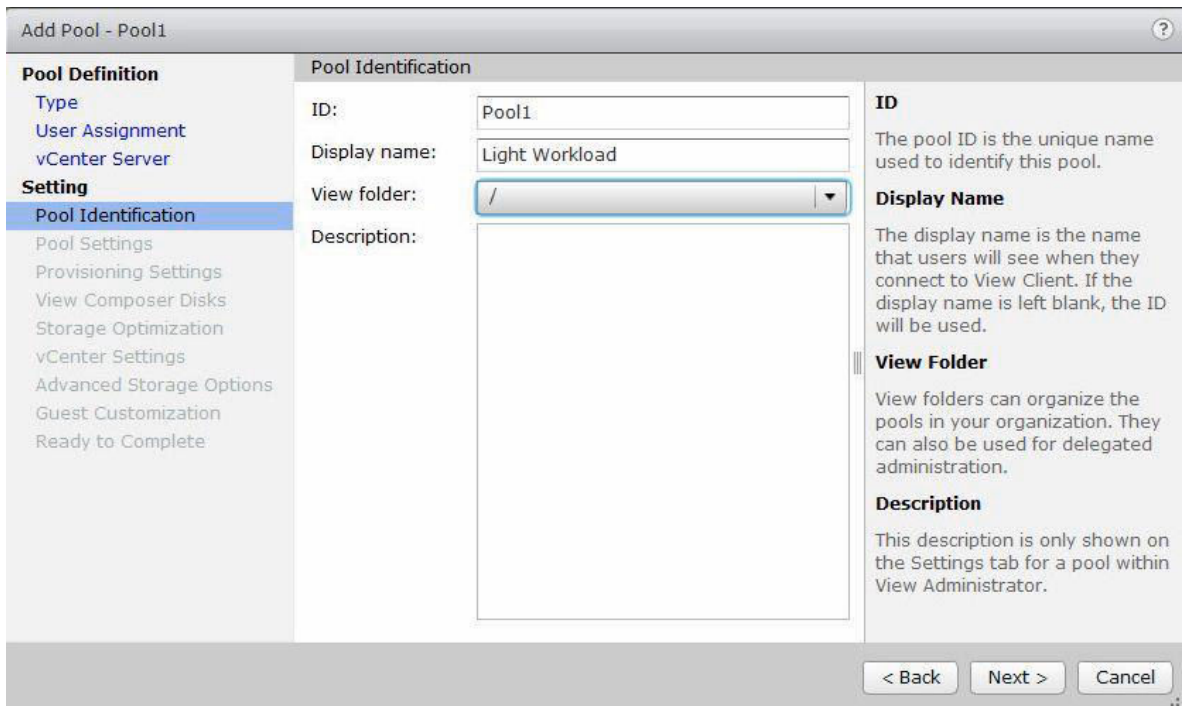
3. To deploy a non-persistent desktop pool, select **Floating**, and then click **Next**.



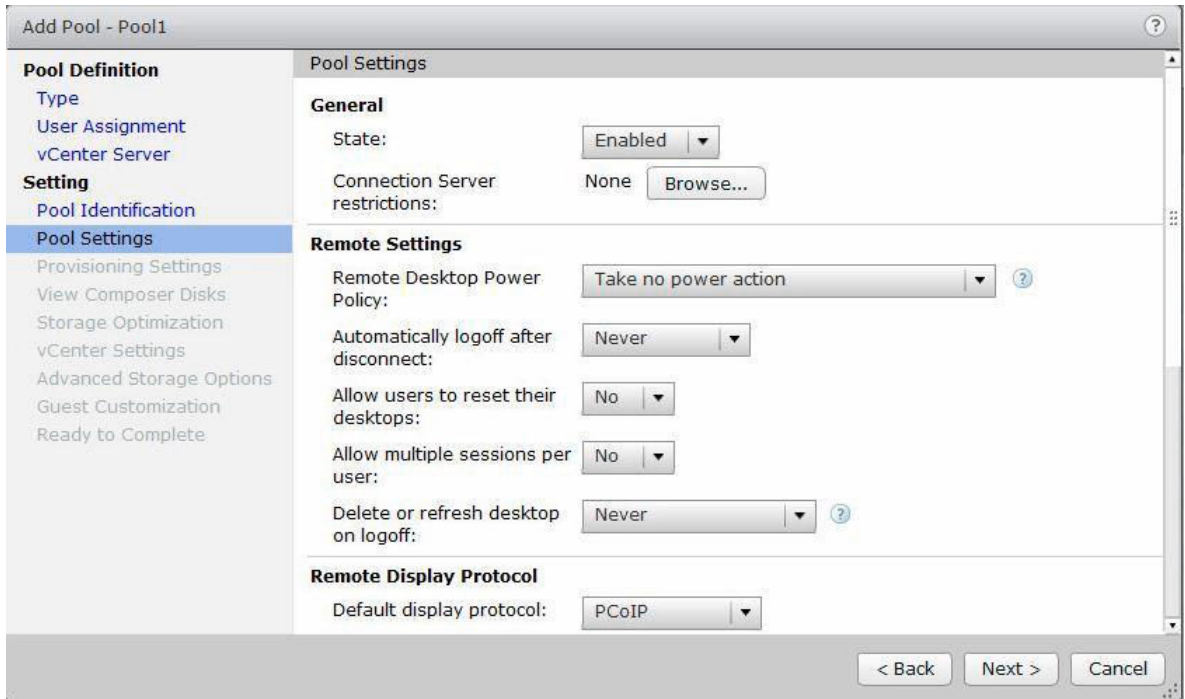
4. Select **View composer linked clones** and click **Next**.



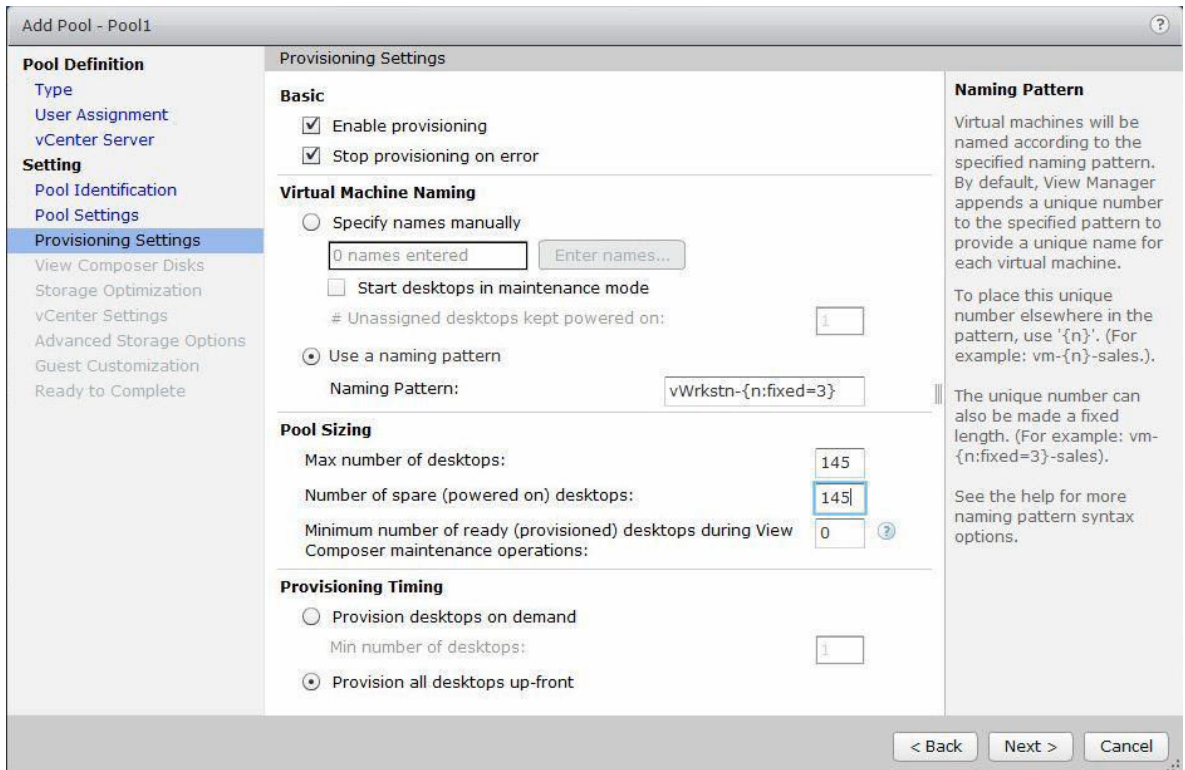
5. Type an appropriate Pool ID and display name click **Next**.



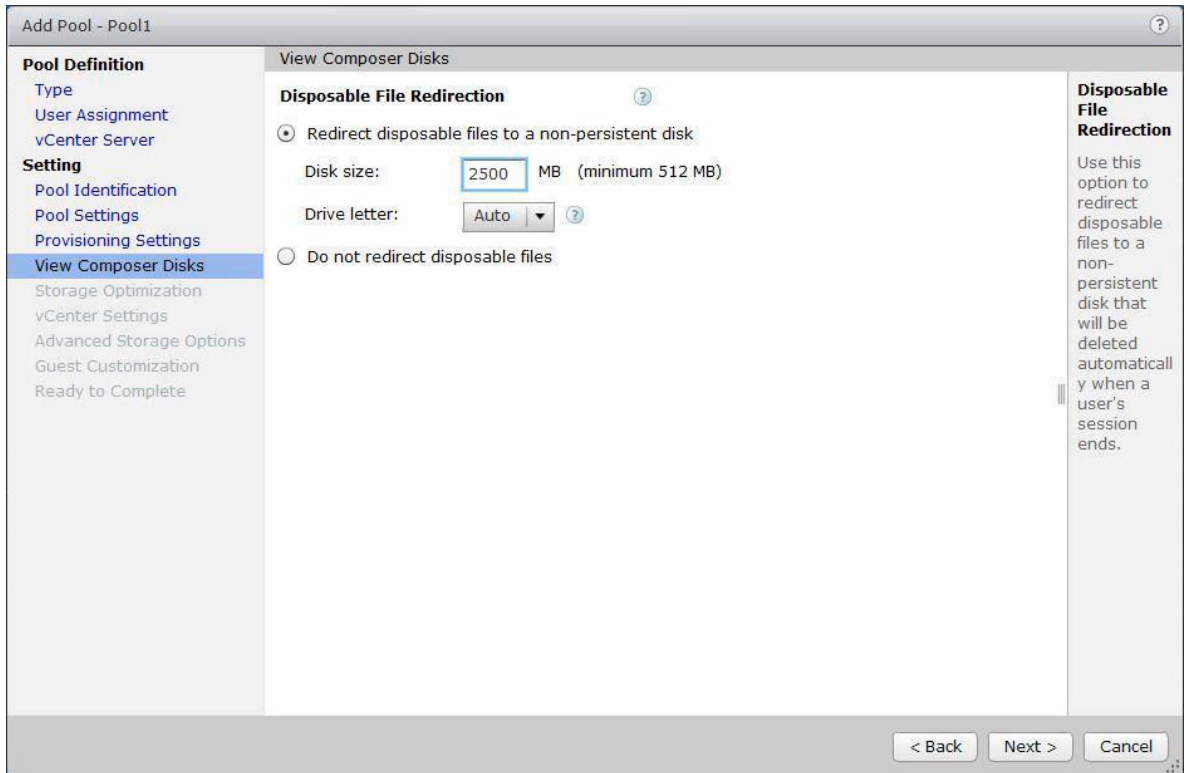
6. Accept the default pool settings and click **Next**.



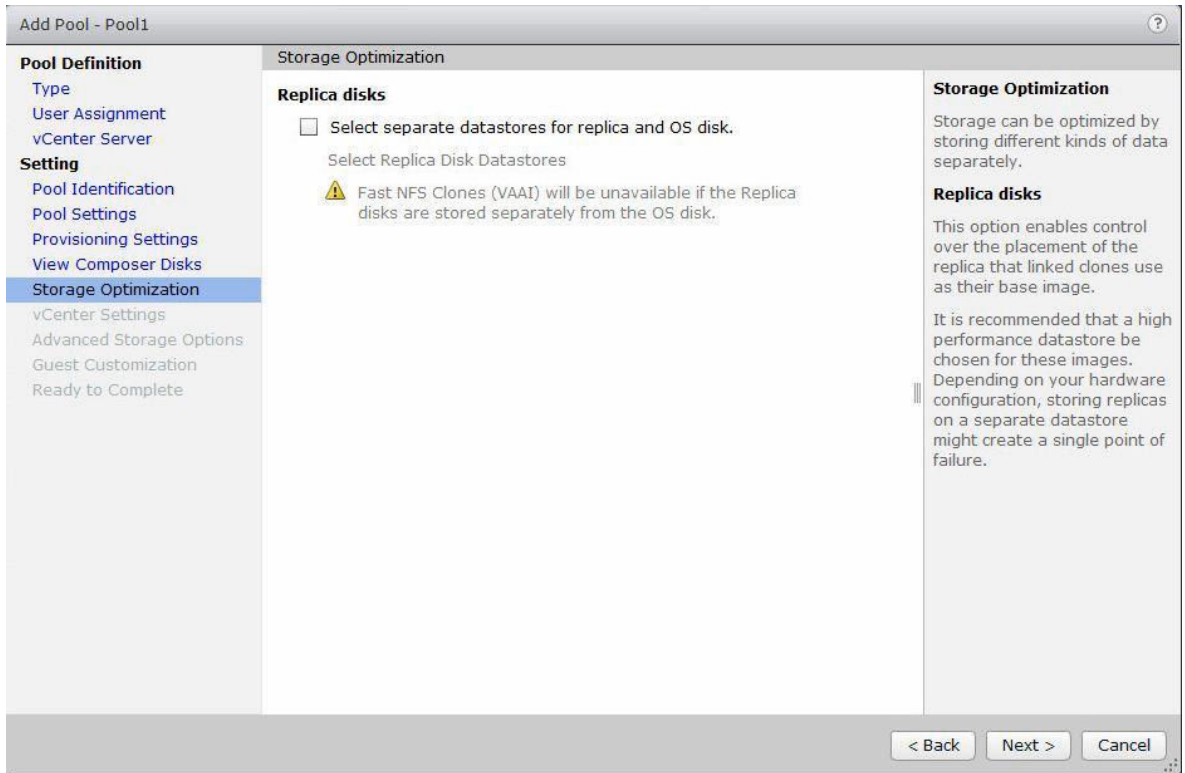
7. Type an appropriate naming pattern for the desktop pool, and under pool sizing, specify the number of desktops you want to deploy in a pool and click **Next**.



8. Change disposable disk file size to 2500 MB and click **Next**.



9. Leave default settings as is, and then click **Next**.



10. To select a base image from which you want to deploy desktop pool, click the **Browse** button associated with **Parent VM**.

Add Pool - Pool1

Pool Definition

- Type
- User Assignment
- vCenter Server
- Setting**
- Pool Identification
- Pool Settings
- Provisioning Settings
- View Composer Disks
- Storage Optimization
- vCenter Settings**
- Advanced Storage Options
- Guest Customization
- Ready to Complete

vCenter Settings

Default Image

1 Parent VM:

2 Snapshot:

Virtual Machine Location

3 VM folder location:

Resource Settings

4 Host or cluster:

5 Resource pool:

6 Datastores: Click Browse to select

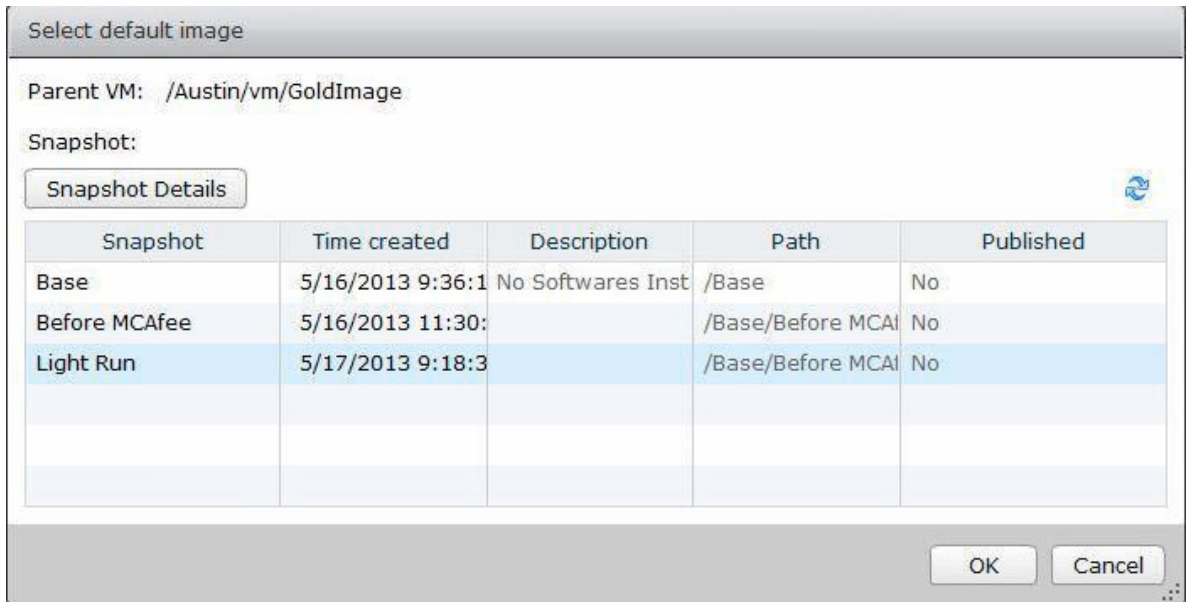
Select Parent VM

Select the virtual machine to be used as the parent VM for this desktop pool.

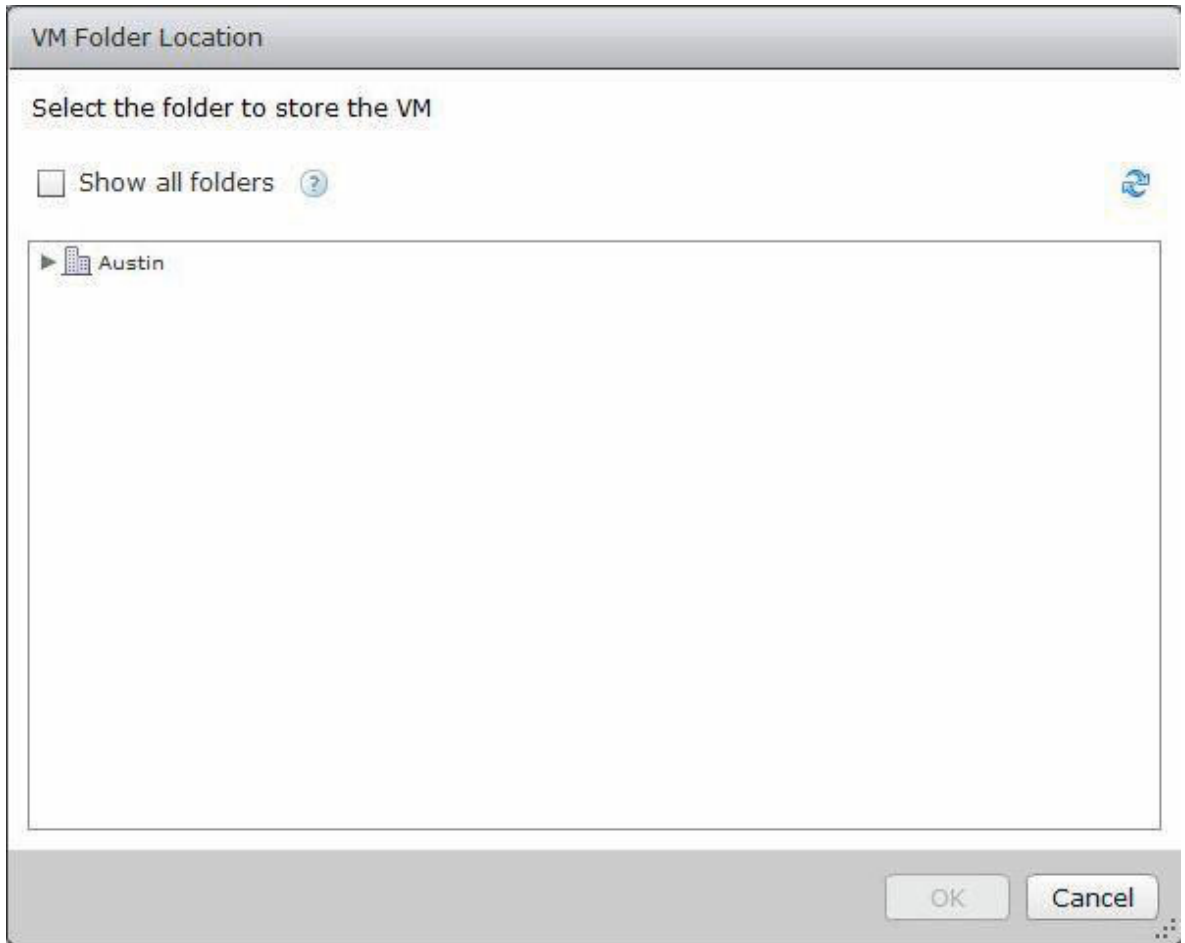
Show all parent VMs ? Filter ▼

Name	Path
GoldImage	/Austin/vm/GoldImage
L-1	/Austin/vm/L-1
L-10	/Austin/vm/L-10
L-2	/Austin/vm/L-2
L-3	/Austin/vm/L-3
L-4	/Austin/vm/L-4
L-5	/Austin/vm/L-5
L-6	/Austin/vm/L-6
L-7	/Austin/vm/L-7
L-8	/Austin/vm/L-8
L-9	/Austin/vm/L-9

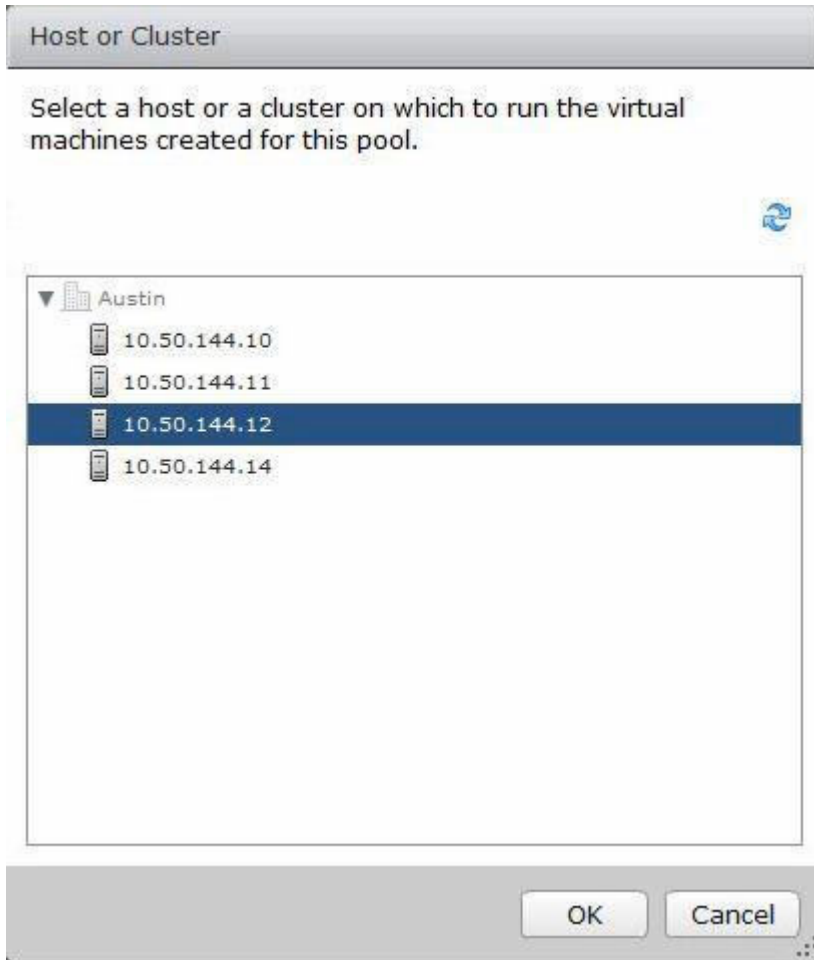
11. Similar to task 10, click **Browse** and select the snapshot of the base image and click **OK**.



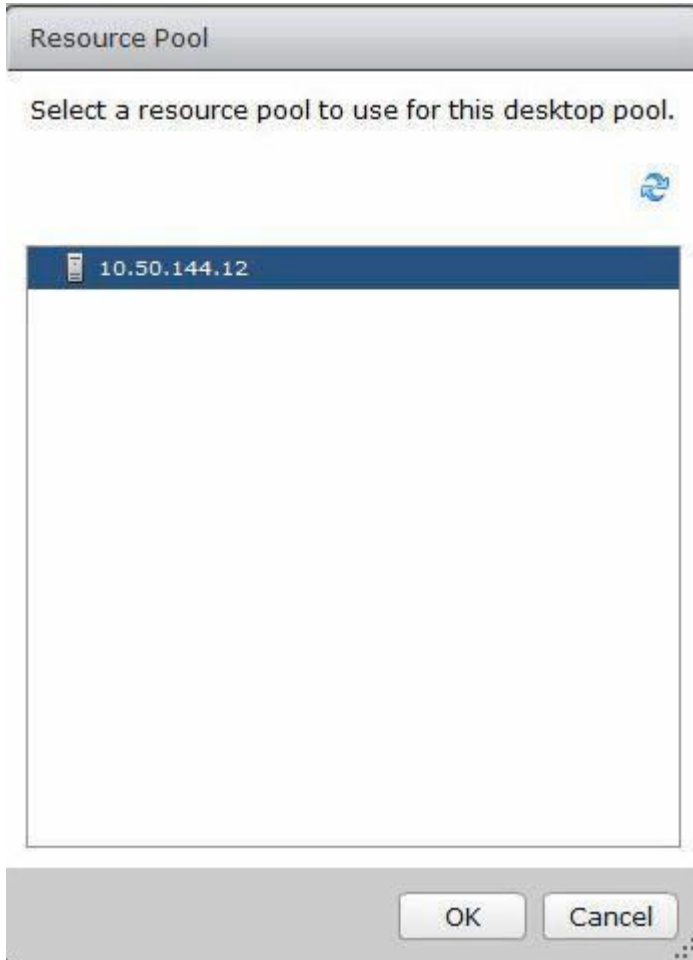
12. Similar to task 10, click **Browse** and select appropriate folder to store the VM, and then click **OK**.



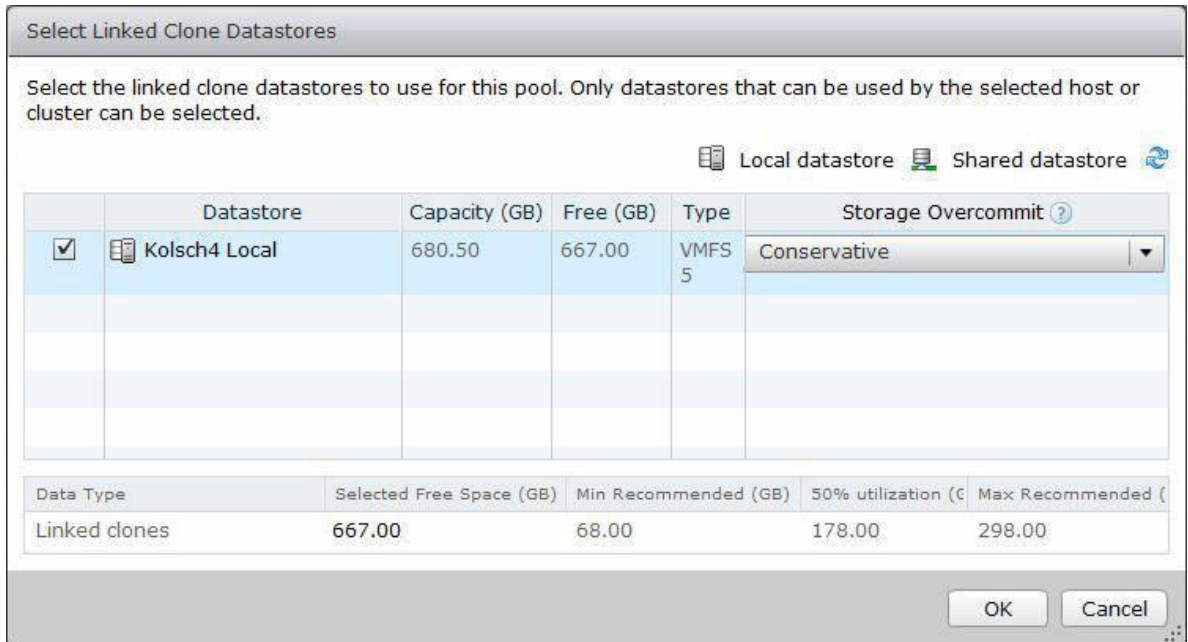
13. Similar to task 10, click **Browse** and select appropriate host or cluster where you want to deploy desktop pool, and then click **OK**.



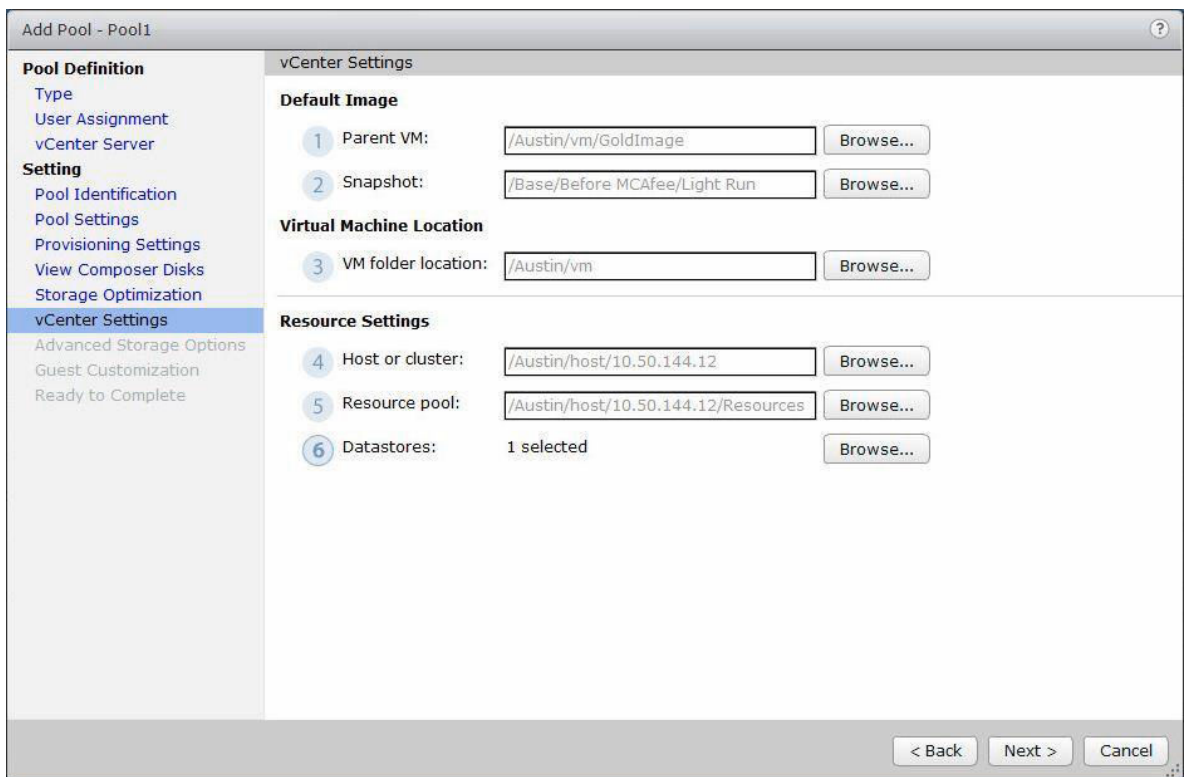
14. Similar to task 10, click **Browse** and select the resource pool, and then click **OK**.



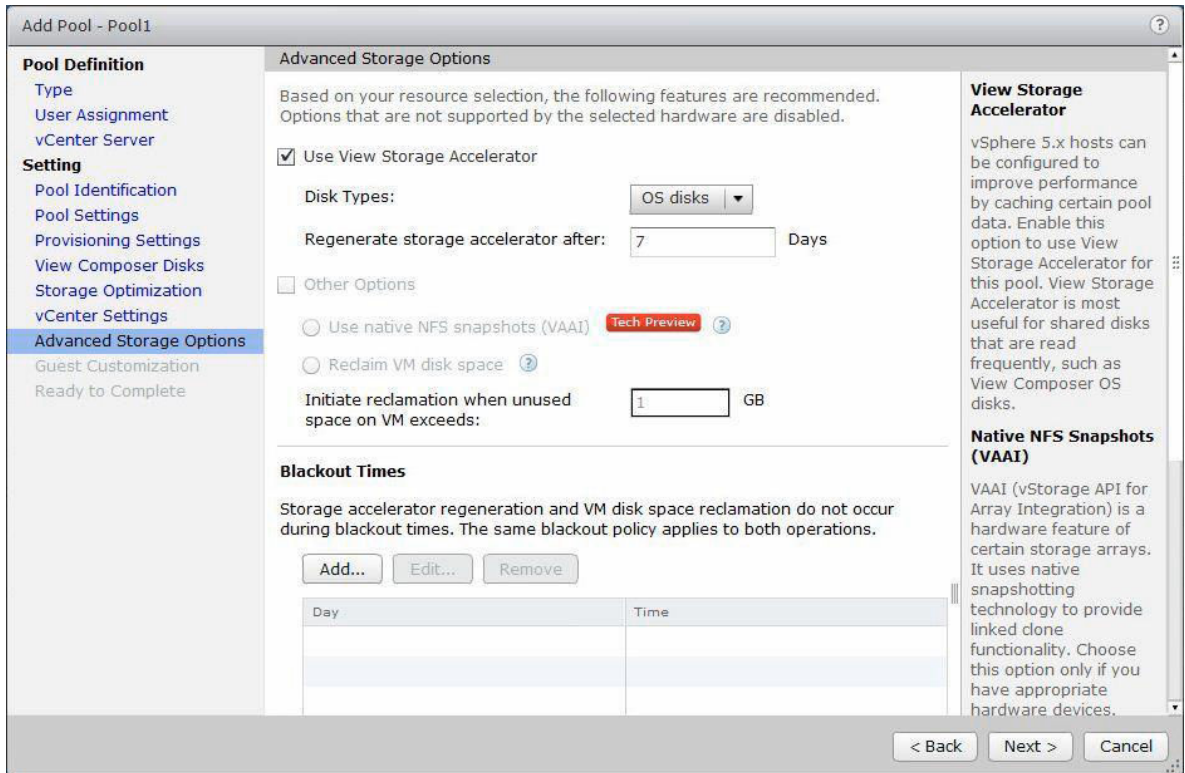
15. Similar to task 10, click **Browse**, select appropriate datastore for the desktop pool, and then click **OK**.



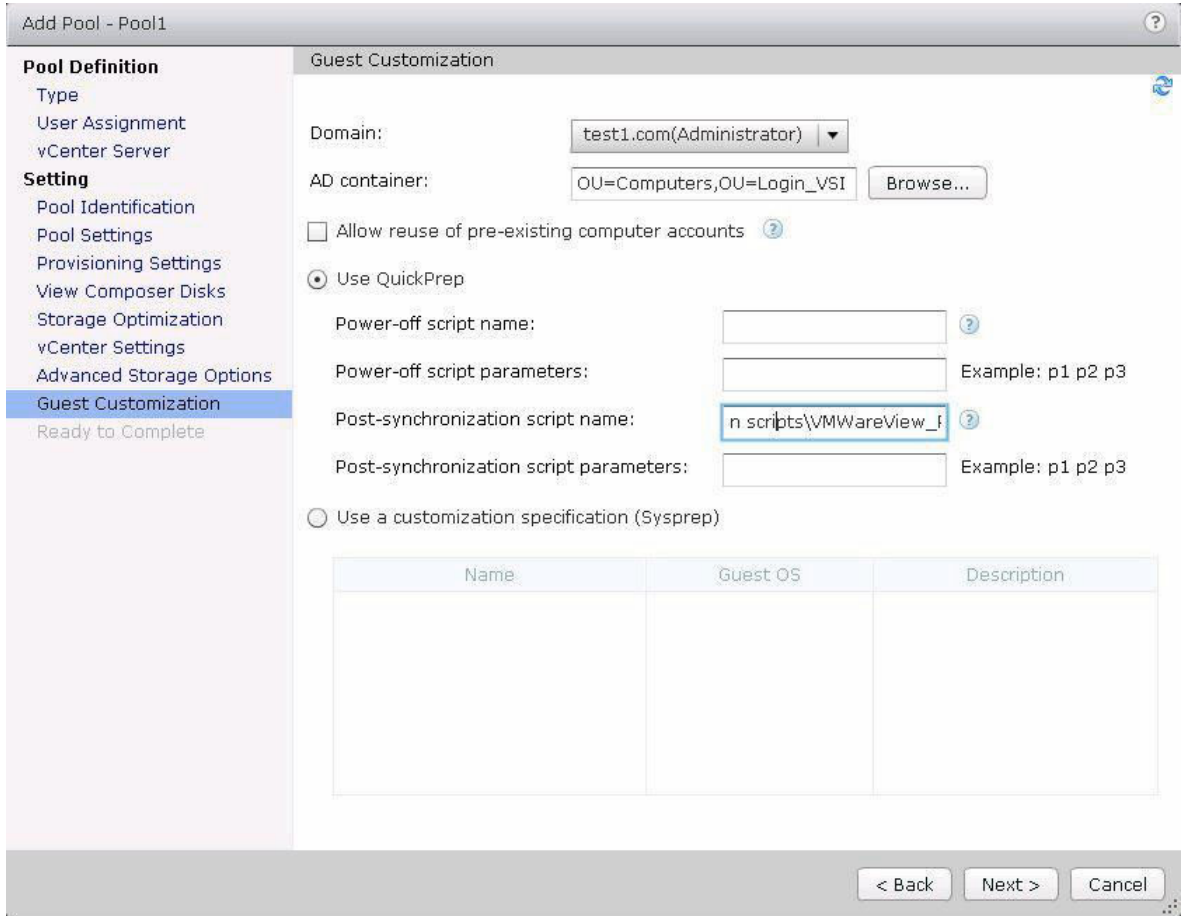
16. After typing data about vCenter Settings, click **Next**.



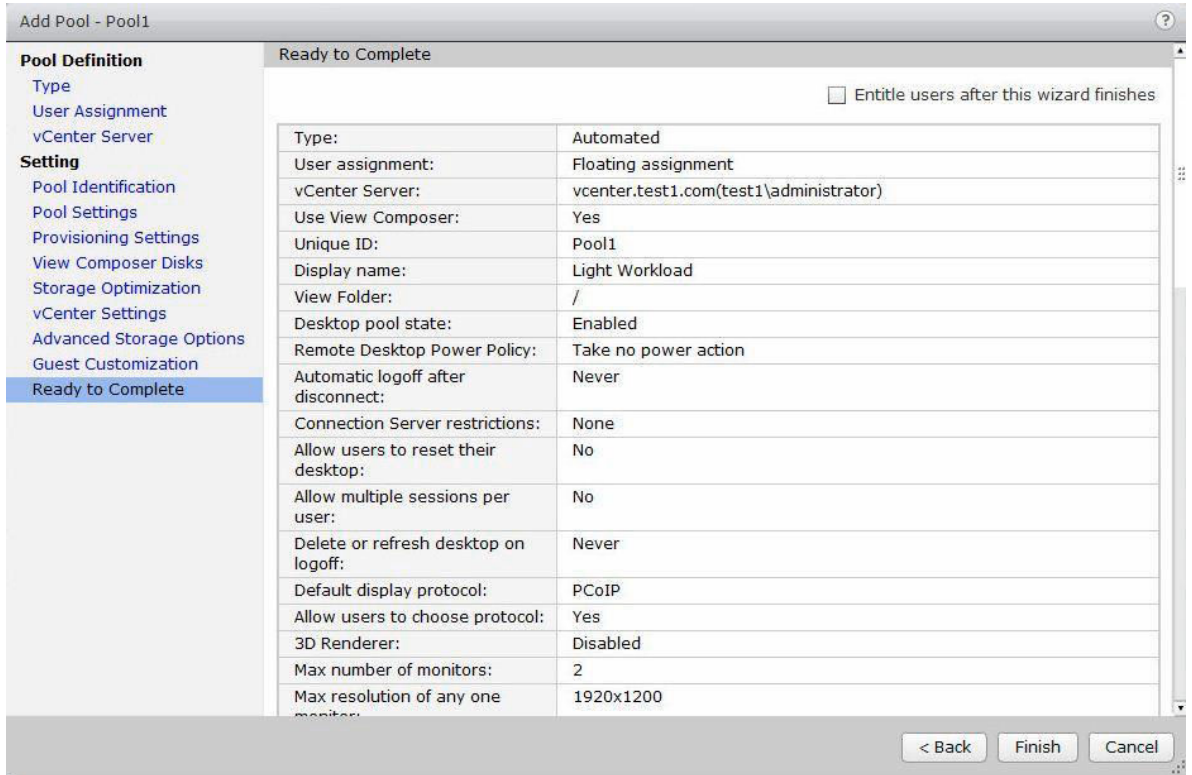
17. Under the **Advanced Storage Options** section, leave the default settings as is, and then click **Next**.



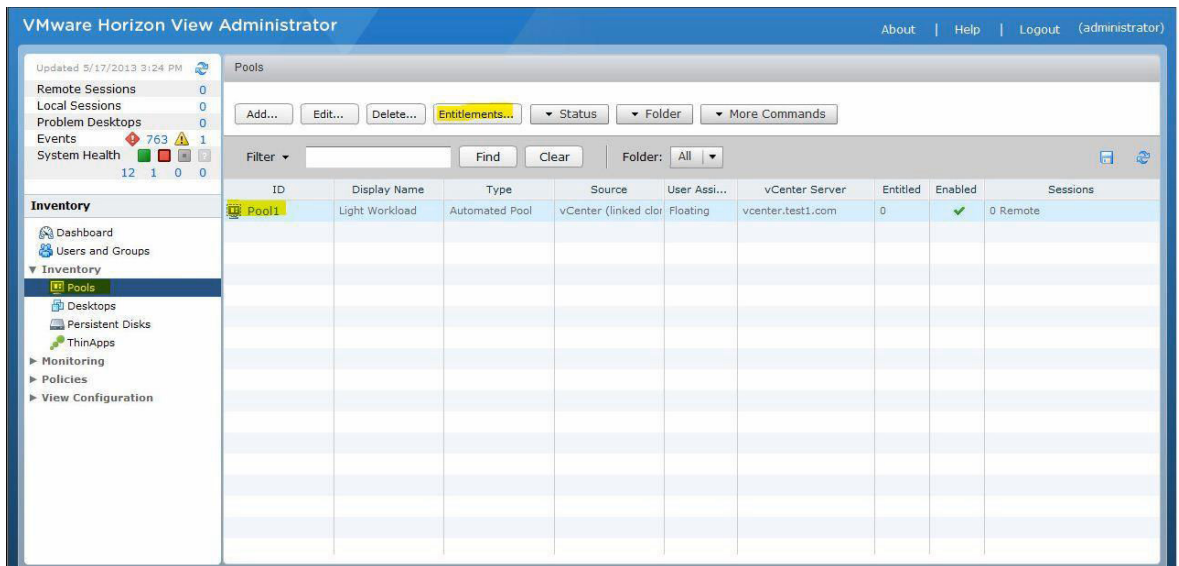
- In the **Guest Customization** section, select the appropriate AD container for the desktop pool by clicking **Browse** and type appropriate data in the fields (if you planning to use any scripts for desktop pool) and click **Next**.



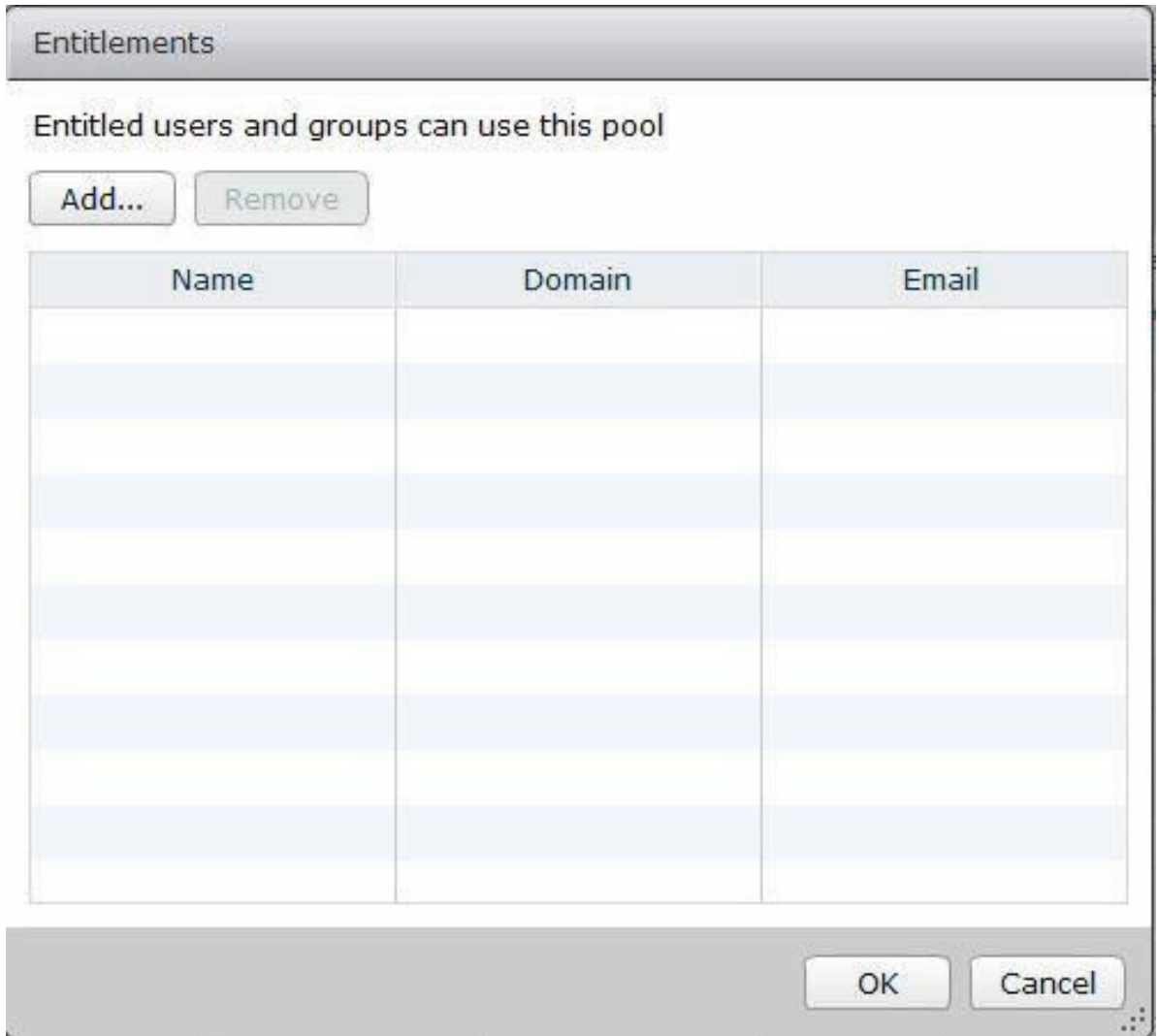
19. Review the settings and click **Finish** to deploy desktop pool.



20. To entitle a pool to users, in the left pane, under **Inventory**, click **Pool**, and then click **Entitlements**.



21. Click **Add**.



22. Select appropriate users or groups to which you want to entitle the desktop pool and click **OK**.

Find User or Group

Type: Users Groups

Domain: Entire Directory ▼

Name/User name: Contains ▼ login

Description: Contains ▼

Find

Displaying the first 100 results that match your criteria. Refine your search criteria to see additional results.

Name	User Name	Email	Description	In Folder
Login_VSI_TS	Login_VSI_TS/test			test1.com/Login_v
Login_VSI1	Login_VSI1@test1		Login VSI	test1.com/Login_v
Login_VSI10	Login_VSI10@test		Login VSI	test1.com/Login_v
Login_VSI11	Login_VSI11@test		Login VSI	test1.com/Login_v

OK Cancel

This Completes VMware view desktop pool deployment and entitlement process.

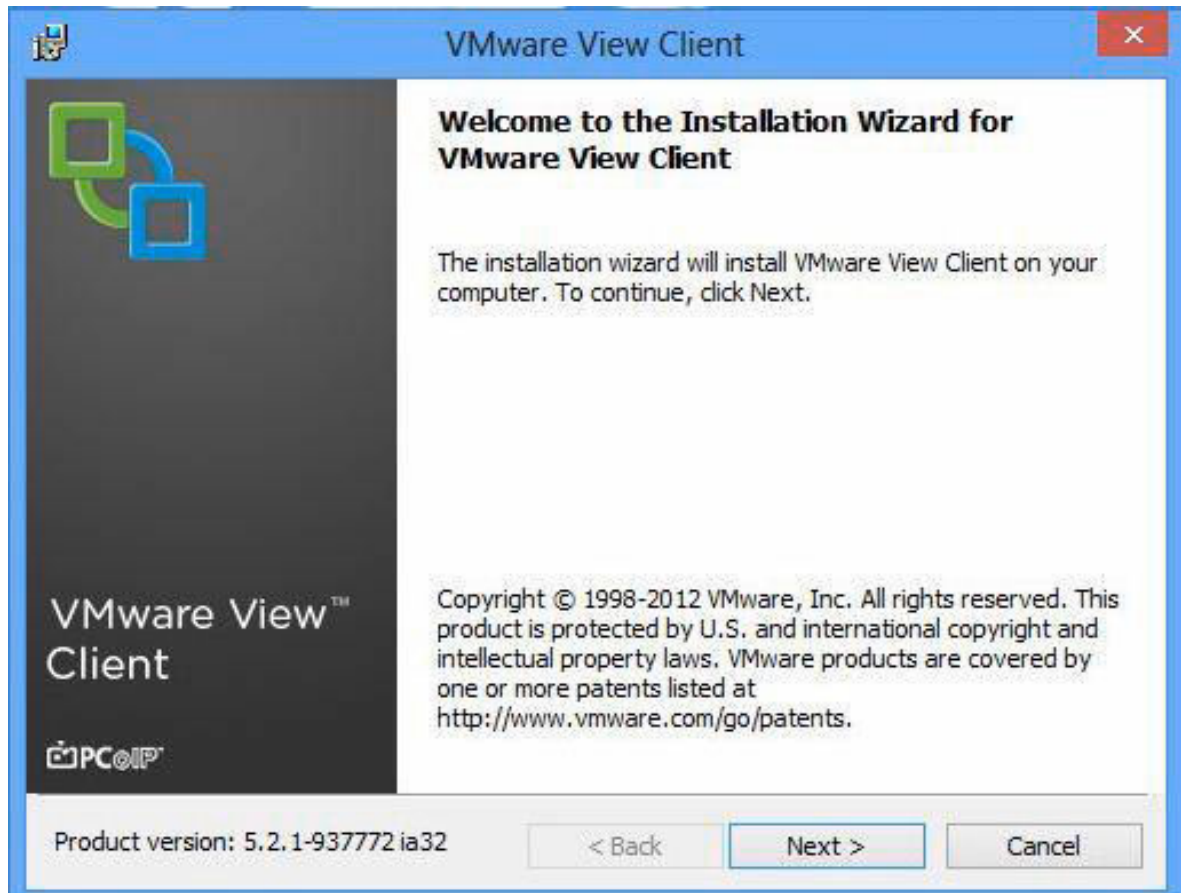
VMware View Client

For a VMware View environment, the first task in client-side software installation process is to use any web browser to go to **https://<IP Address of View Connection Server>**

Note that any proxies that are in place to facilitate internet access may need to be disabled or bypassed to allow navigation to this IP address. The installation of the View client is then completed by using the process described here.

The next task is to download and run the View client (Local Mode typically not required). The installation is then completed by using the process described later in the guide.

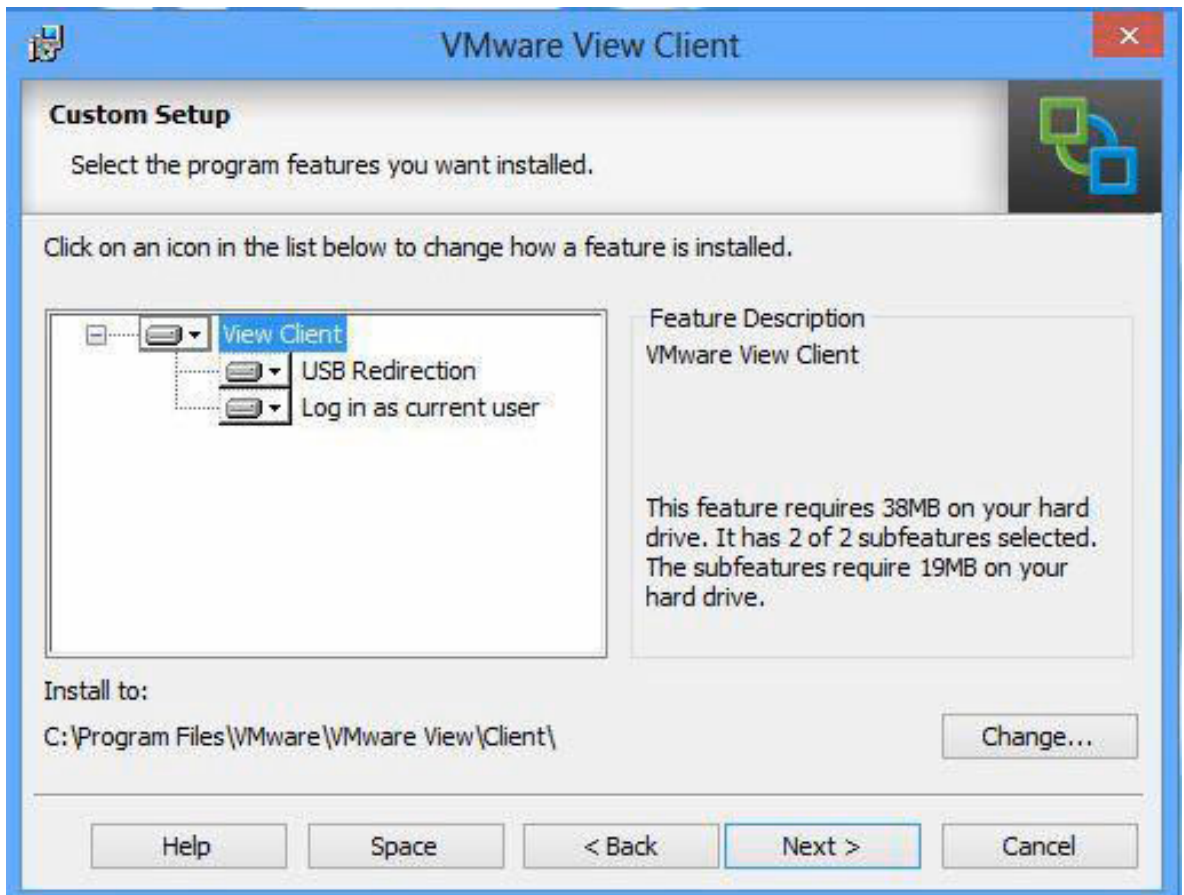
1. Click **Next**.



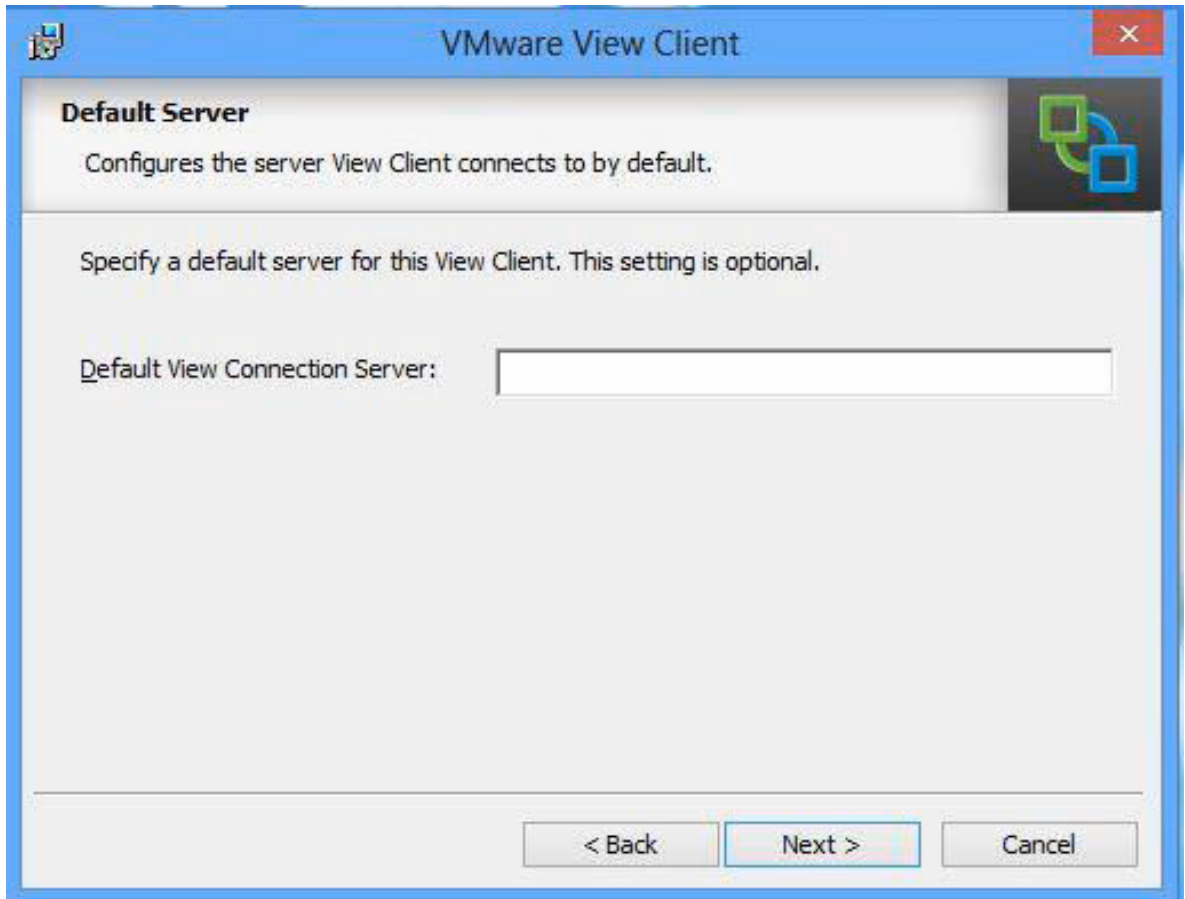
2. Accept the End User License Agreement, click **Next**.



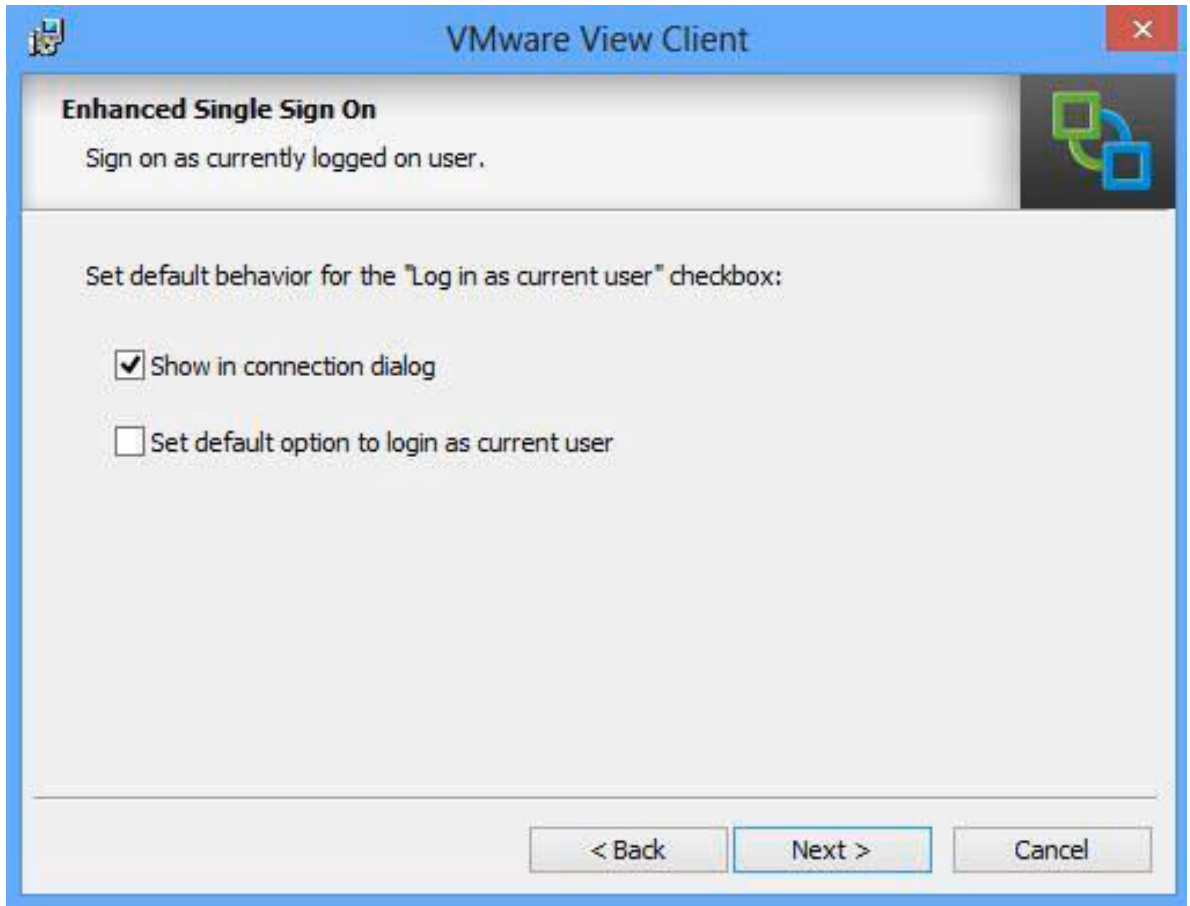
3. Complete the custom setup tasks (typically defaults settings can be retained), and then click **Next**.



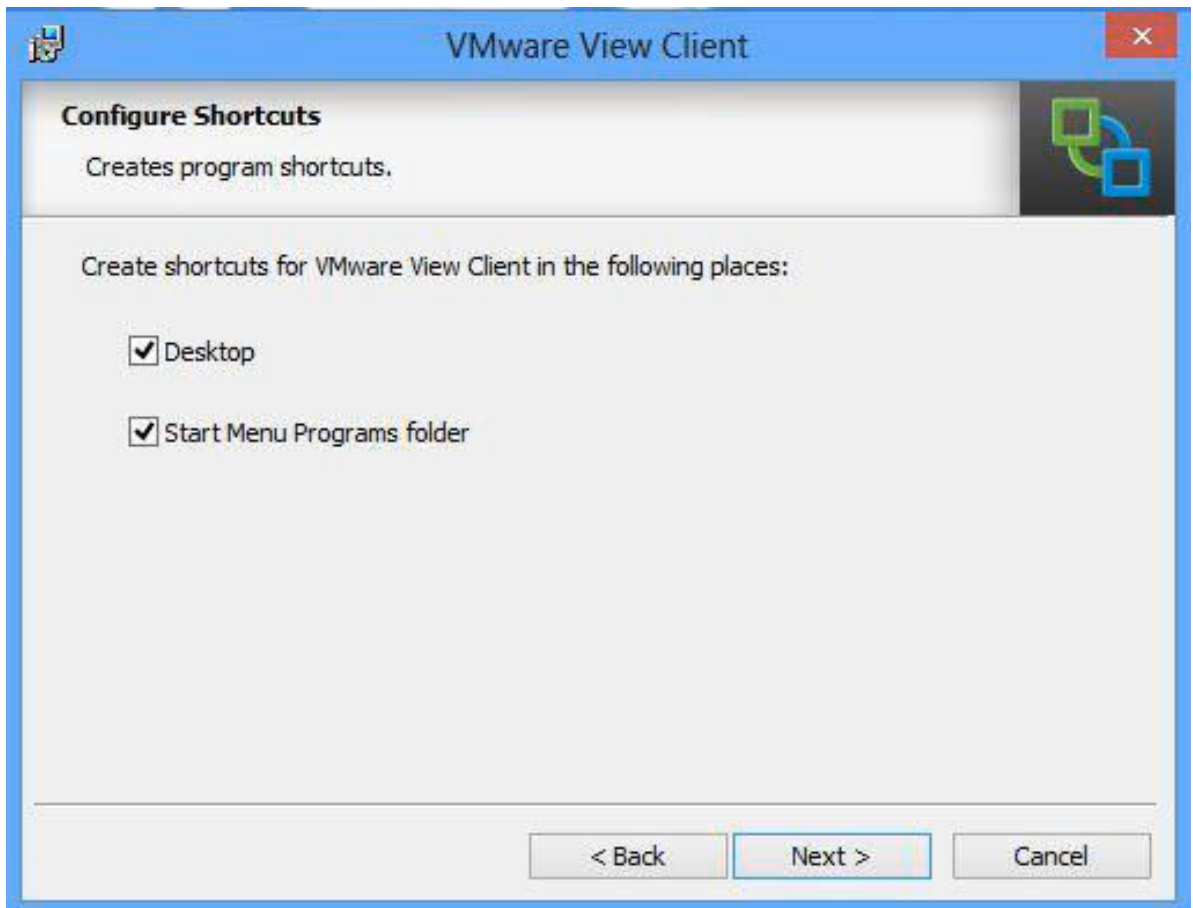
4. Configure default View Connection Server (if required; solution will still function if this field is left blank), click **Next**.



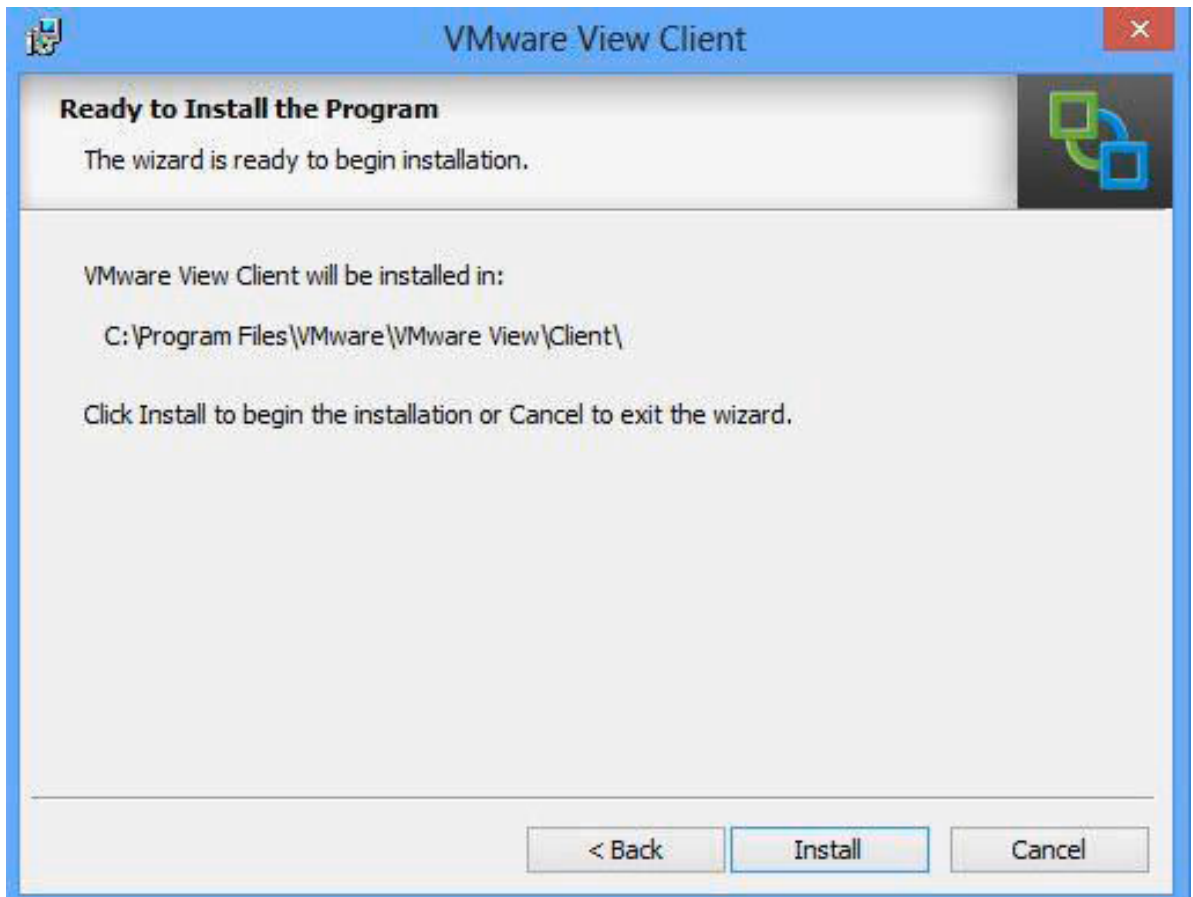
5. Configure "Login as current user" if required (typically this is not required but this is implementation-specific). Click **Next**



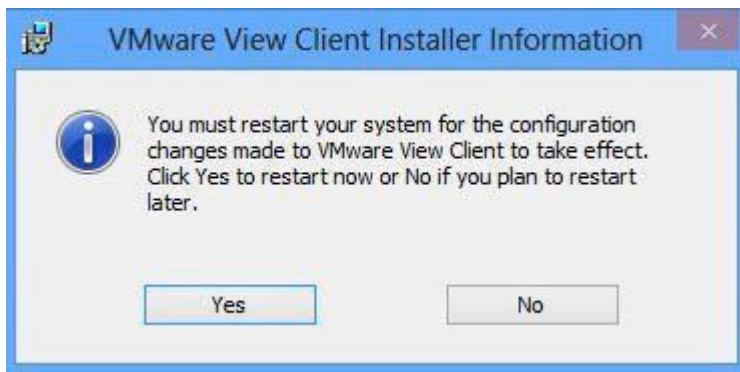
6. Configure shortcuts or Start menu as required. Click **Next**.



7. Click **Next** to complete installation.



8. Endpoint device needs to be restarted. Restart immediately or later as appropriate.



Upgrading Existing Evo:Rail Appliance

Update

Complete these steps to update deployed and configured EVO:RAIL appliances. This process will involve updating the EVO:RAIL software, the vCenter software and the ESXi software. You can upgrade to 1.0.2 directly from 1.0.0 or from 1.0.1.

In addition, EVO:RAIL Release 1.0.0 or 1.0.1 customers will have to update their Log Insight license, as described in the support section.

Four files are needed to upgrade to EVO:RAIL Release 1.0.2 from Release 1.0.0. If you are upgrading from 1.0.1 to 1.0.2, only two files are needed - you can skip vCenter Server and ESXi.

All files **must** be uploaded from <http://my.vmware.com> in to a directory accessible from your EVO:RAIL management workstation/laptop.

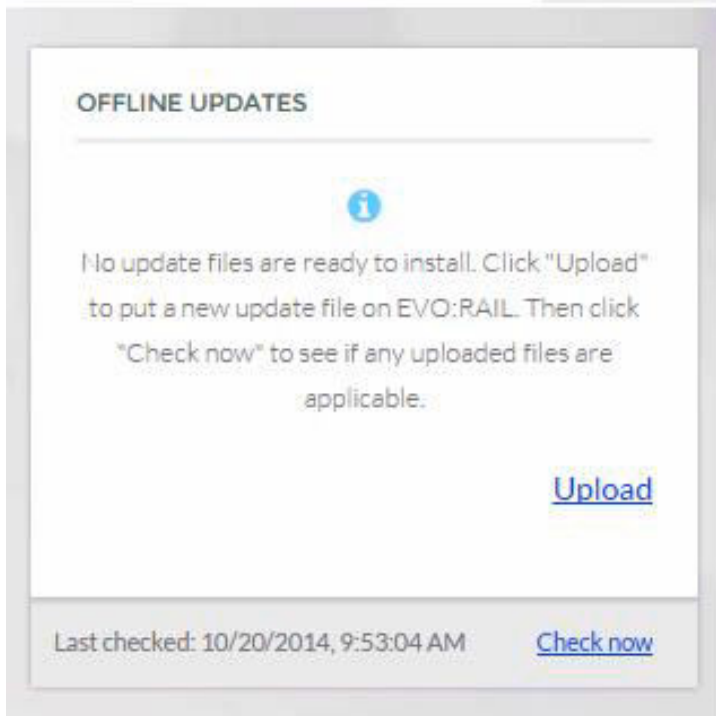
- vmware-marvin-1.0.2-2456370.rpm
- VMware-vCenter-Server-Appliance-5.5.0.20200-2183109-updaterepo.zip
- EVO_RAIL_1.0.2-2456370.zip
- ESXi550-201410001.zip

Update EVO:RAIL RPM

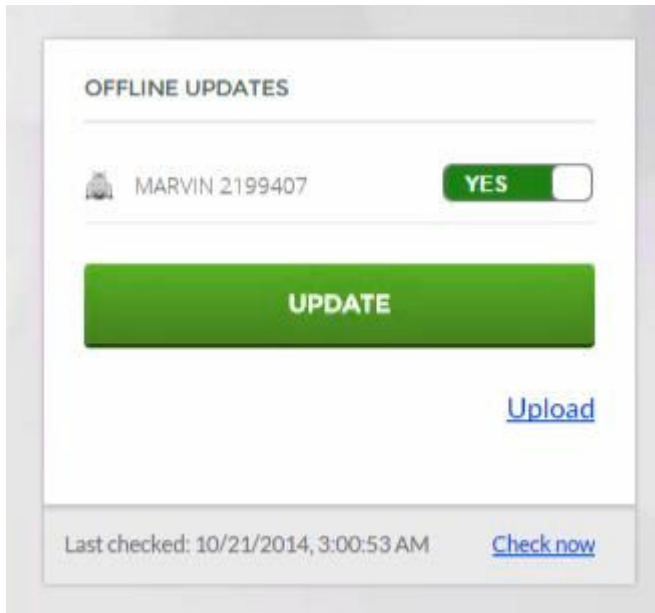
- Create a snapshot or backup copy of the vCenter Server virtual appliance. This can be accomplished by connecting to VMware vSphere Web Client via **https://<hostname>:9443**, where <hostname> is the IP address or hostname of EVO:RAIL.
- Verify that you are logged in to EVO:RAIL as administrator@vsphere.local or as a user with administrator privileges. The URL format is Error! Hyperlink reference not valid., where <hostname> is the IP address or hostname of the EVO:RAIL management interface.
- Complete these update steps in the same order of their occurrence.

This step is needed for all EVO:RAIL upgrades.

1. From EVO:RAIL Management, click the **Config** icon in the left menu bar.
2. In the upper right corner of the configuration page, in the **Offline Updates** section, click the **Upload** link, and browse to **vmware-marvin-1.0.2-2456370.rpm**.



3. Click **Open** to select the file.
EVO:RAIL uploads the .rpm file and displays a confirmation message.
4. Click the **Check now** link.
5. If the EVO:RAIL check succeeds, the **Offline Updates** box changes to allow you to perform the update.
6. Move the **Offline Updates** switch from **No** to **Yes**.
7. Click the **Update** button.



After the update is complete, you will receive a notification that you are disconnected from EVO:RAIL management.

8. It can take up to five minutes for the new EVO:RAIL RPM to initialize.
9. After EVO:RAIL UI restarts, you will be prompted to log in again.

Update vCenter Server

This step is needed for customers upgrading from EVO:RAIL Release 1.0.0. It is not needed for customers upgrading from 1.0.1.

1. From the EVO:RAIL Management, click the **Config** icon upper left corner.
2. In the **Offline Updates** section, click the **Upload** link, and browse to **VMware-vCenter-Server-Appliance-5.5.0.20200-2183109-updaterepo.zip**.
3. Click **Open** to select the file.
 - EVO:RAIL uploads the .zip file and displays a confirmation dialog box.
4. Click the **Check now** link.
5. If the EVO:RAIL check succeeds, the **Offline Updates** box changes to allow you to perform the update.
6. Move the Offline Updates switch from **No** to **Yes**.
7. Click the **Update** button.

After the update is complete, the vCenter Server VM will restart automatically. You will receive a notification that you disconnected from EVO:RAIL management.

8. It can take up to 15 minutes for the vCenter VM to reboot and for all of services to initialize.
9. After EVO:RAIL UI restarts, you will be prompted to log in again.

Update EVO:RAIL VIB

To update EVO:RAIL:

1. From the EVO:RAIL Management, click the **Config** icon in the upper left corner.
2. In the **Offline Updates** section, click the **Upload** link, and browse to **EVO_RAIL_1.0.2-2456370.zip**.
3. Click **Open** to select the file.
4. EVO:RAIL uploads the .zip file and displays a confirmation dialog box.
5. Click the **Check now** link.
6. If the EVO:RAIL check succeeds, the Offline Updates box changes to allow you to perform the update
7. Click the **Update** button.

The update time depends on the quantity of VMs and might take a few hours for completion. However, the appliance will function as normal during that time.

Update ESXi

This step is needed for customers upgrading from EVO:RAIL Release 1.0.0; it is not needed for customers upgrading from 1.0.1.

1. From the EVO:RAIL Management, click the **Config** icon on the left menu bar.
2. In the Offline Updates box, click the **Upload** link, and browse to **ESXi550-201410001.zip**.
3. Click **Open** to select the file.
 - EVO:RAIL uploads the .zip file and displays a confirmation dialog box.
4. Click the **Check now** link.
5. If the EVO:RAIL check succeeds, the Offline Updates box changes to allow you to perform the update.
6. Move the Offline Updates switch from **No** to **Yes**.
7. Click the **Update** button.

The update time depends on the quantity of VMs and might take a few hours for completion. However, the appliance will function as normal during that time.